

Latina Women Data

Demographics

race

	Frequency	Percent	Valid Percent	Cumulative Percent
Valid Asian	3	1.3	1.3	1.3
Black	1	.4	.4	1.8
Hispanic	216	96.9	96.9	98.7
White	3	1.3	1.3	100.0
Total	223	100.0	100.0	

reside

	Frequency	Percent	Valid Percent	Cumulative Percent
Valid north coast	33	14.8	14.8	14.8
north county	66	29.6	29.6	44.4
slo	45	20.2	20.2	64.6
south county	79	35.4	35.4	100.0
Total	223	100.0	100.0	

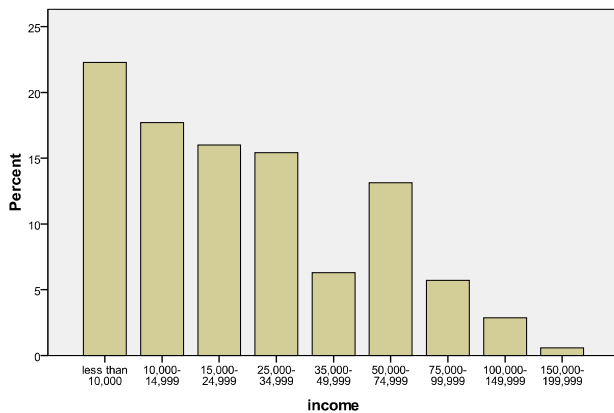
age4

	Frequency	Percent	Valid Percent	Cumulative Percent
Valid 25 or less	47	21.1	26.4	26.4
26-35	55	24.7	30.9	57.3
36-45	46	20.6	25.8	83.1
45 and above	30	13.5	16.9	100.0
Total	178	79.8	100.0	
Missing System	45	20.2		
Total	223	100.0		

Statistics

Age		
N	Valid	178
	Missing	45
Mean		34.35
Median		33.00
Mode		23
Std. Deviation		11.396

income



Statistics

	adults	kids
N	Valid	197
	Missing	26
Mean	2.39	1.75
Median	2.00	2.00
Mode	2	2
Std. Deviation	1.184	1.291
Skewness	1.008	.254
Std. Error of Skewness	.173	.175

educ4

		Frequency	Percent	Valid Percent	Cumulative Percent
Valid	less than high school	40	17.9	20.6	20.6
	high school/ged	59	26.5	30.4	51.0
	some-2 year degree	64	28.7	33.0	84.0
	4 year degree or higher	31	13.9	16.0	100.0
	Total	194	87.0	100.0	
Missing	System	29	13.0		
Total		223	100.0		

educ6

		Frequency	Percent	Valid Percent	Cumulative Percent
Valid	less than high school	40	17.9	20.6	20.6
	high school/ged	59	26.5	30.4	51.0
	some college	41	18.4	21.1	72.2
	2 year college degree	23	10.3	11.9	84.0
	4 year college degree	20	9.0	10.3	94.3
	graduate degree	11	4.9	5.7	100.0
	Total	194	87.0	100.0	
Missing	System	29	13.0		
Total		223	100.0		

adults

		Frequency	Percent	Valid Percent	Cumulative Percent
Valid	0	2	.9	1.0	1.0
	1	37	16.6	18.8	19.8
	2	89	39.9	45.2	65.0
	3	36	16.1	18.3	83.2
	4	23	10.3	11.7	94.9
	5	4	1.8	2.0	97.0
	6	6	2.7	3.0	100.0
	Total	197	88.3	100.0	
Missing	System	26	11.7		
	Total	223	100.0		

kids

		Frequency	Percent	Valid Percent	Cumulative Percent
Valid	0	43	19.3	22.3	22.3
	1	36	16.1	18.7	40.9
	2	62	27.8	32.1	73.1
	3	33	14.8	17.1	90.2
	4	16	7.2	8.3	98.4
	5	3	1.3	1.6	100.0
	Total	193	86.5	100.0	
Missing	System	30	13.5		
	Total	223	100.0		

Top Five Issues to improve lives of women and girls:
Frequencies

		first			
		Frequency	Percent	Valid Percent	Cumulative Percent
Valid	1	43	19.3	24.0	24.0
	2	34	15.2	19.0	43.0
	3	10	4.5	5.6	48.6
	4	30	13.5	16.8	65.4
	5	2	.9	1.1	66.5
	7	1	.4	.6	67.0
	8	1	.4	.6	67.6
	9	2	.9	1.1	68.7
	10	4	1.8	2.2	70.9
	11	3	1.3	1.7	72.6
	12	3	1.3	1.7	74.3
	13	2	.9	1.1	75.4
	14	2	.9	1.1	76.5
	15	4	1.8	2.2	78.8
	16	6	2.7	3.4	82.1
	17	3	1.3	1.7	83.8
	18	3	1.3	1.7	85.5
	19	20	9.0	11.2	96.6
	20	2	.9	1.1	97.8
	21	2	.9	1.1	98.9
	22	2	.9	1.1	100.0
		Total	179	80.3	100.0
Missing	System	44	19.7		
Total		223	100.0		

second

		Frequency	Percent	Valid Percent	Cumulative Percent
Valid	1	15	6.7	8.4	8.4
	2	31	13.9	17.3	25.7
	3	10	4.5	5.6	31.3
	4	37	16.6	20.7	52.0
	5	4	1.8	2.2	54.2
	6	4	1.8	2.2	56.4
	7	1	.4	.6	57.0
	8	2	.9	1.1	58.1
	9	3	1.3	1.7	59.8
	10	8	3.6	4.5	64.2
	11	5	2.2	2.8	67.0
	12	7	3.1	3.9	70.9
	13	3	1.3	1.7	72.6
	14	5	2.2	2.8	75.4
	15	6	2.7	3.4	78.8
	16	10	4.5	5.6	84.4
	17	3	1.3	1.7	86.0
	18	7	3.1	3.9	89.9
	19	9	4.0	5.0	95.0
	20	1	.4	.6	95.5
	21	2	.9	1.1	96.6
22	5	2.2	2.8	99.4	
47	1	.4	.6	100.0	
	Total	179	80.3	100.0	
Missing	System	44	19.7		
Total		223	100.0		

third

		Frequency	Percent	Valid Percent	Cumulative Percent
Valid	1	11	4.9	6.3	6.3
	2	11	4.9	6.3	12.5
	3	10	4.5	5.7	18.2
	4	22	9.9	12.5	30.7
	5	3	1.3	1.7	32.4
	6	8	3.6	4.5	36.9
	7	2	.9	1.1	38.1
	8	1	.4	.6	38.6
	9	9	4.0	5.1	43.8
	10	15	6.7	8.5	52.3
	11	6	2.7	3.4	55.7
	12	11	4.9	6.3	61.9
	13	5	2.2	2.8	64.8
	14	6	2.7	3.4	68.2
	15	6	2.7	3.4	71.6
	16	7	3.1	4.0	75.6
	17	5	2.2	2.8	78.4
	18	14	6.3	8.0	86.4
	19	11	4.9	6.3	92.6
	21	5	2.2	2.8	95.5
	22	8	3.6	4.5	100.0
		Total	176	78.9	100.0
Missing	System	47	21.1		
Total		223	100.0		

fourth

		Frequency	Percent	Valid Percent	Cumulative Percent
Valid	1	3	1.3	1.7	1.7
	2	7	3.1	4.0	5.6
	3	9	4.0	5.1	10.7
	4	13	5.8	7.3	18.1
	5	5	2.2	2.8	20.9
	6	6	2.7	3.4	24.3
	7	3	1.3	1.7	26.0
	8	1	.4	.6	26.6
	9	3	1.3	1.7	28.2
	10	16	7.2	9.0	37.3
	11	5	2.2	2.8	40.1
	12	11	4.9	6.2	46.3
	13	10	4.5	5.6	52.0
	14	10	4.5	5.6	57.6
	15	11	4.9	6.2	63.8
	16	13	5.8	7.3	71.2
	17	4	1.8	2.3	73.4
	18	10	4.5	5.6	79.1
	19	21	9.4	11.9	91.0
	20	2	.9	1.1	92.1
	21	7	3.1	4.0	96.0
	22	6	2.7	3.4	99.4
	1317	1	.4	.6	100.0
	Total	177	79.4	100.0	
Missing	System	46	20.6		
Total		223	100.0		

fifth

		Frequency	Percent	Valid Percent	Cumulative Percent
Valid	1	6	2.7	3.6	3.6
	2	4	1.8	2.4	5.9
	3	7	3.1	4.1	10.1
	4	11	4.9	6.5	16.6
	5	9	4.0	5.3	21.9
	6	4	1.8	2.4	24.3
	7	3	1.3	1.8	26.0
	8	5	2.2	3.0	29.0
	9	5	2.2	3.0	32.0
	10	11	4.9	6.5	38.5
	11	2	.9	1.2	39.6
	12	7	3.1	4.1	43.8
	13	9	4.0	5.3	49.1
	14	11	4.9	6.5	55.6
	15	13	5.8	7.7	63.3
	16	10	4.5	5.9	69.2
	17	6	2.7	3.6	72.8
	18	13	5.8	7.7	80.5
	19	12	5.4	7.1	87.6
	20	2	.9	1.2	88.8
	21	10	4.5	5.9	94.7
	22	9	4.0	5.3	100.0
	Total	169	75.8	100.0	
Missing	System	54	24.2		
Total		223	100.0		

Rate Quality of Life

Statistics

rate		
N	Valid	195
	Missing	28
Mean		7.15
Median		8.00
Mode		8
Std. Deviation		1.957
Skewness		-.953
Std. Error of Skewness		.174

		Frequency	Percent	Valid Percent	Cumulative Percent
Valid	1	4	1.8	2.1	2.1
	2	3	1.3	1.5	3.6
	3	3	1.3	1.5	5.1
	4	6	2.7	3.1	8.2
	5	21	9.4	10.8	19.0
	6	22	9.9	11.3	30.3
	7	35	15.7	17.9	48.2
	8	58	26.0	29.7	77.9
	9	25	11.2	12.8	90.8
	10	18	8.1	9.2	100.0
Total		195	87.4	100.0	
Missing	System	28	12.6		
Total		223	100.0		

Feel You Have Reasonable Access:

affhouse

		Frequency	Percent	Valid Percent	Cumulative Percent
Valid	yes	60	26.9	37.7	37.7
	no	99	44.4	62.3	100.0
	Total	159	71.3	100.0	
Missing	System	25	11.2		
	System	39	17.5		
	Total	64	28.7		
Total		223	100.0		

childcare

		Frequency	Percent	Valid Percent	Cumulative Percent
Valid	yes	79	35.4	53.7	53.7
	no	68	30.5	46.3	100.0
	Total	147	65.9	100.0	
Missing	System	40	17.9		
	System	36	16.1		
	Total	76	34.1		
Total		223	100.0		

dviol

	Frequency	Percent	Valid Percent	Cumulative Percent
Valid yes	93	41.7	69.4	69.4
no	41	18.4	30.6	100.0
Total	134	60.1	100.0	
Missing	44	19.7		
System	45	20.2		
Total	89	39.9		
Total	223	100.0		

drug

	Frequency	Percent	Valid Percent	Cumulative Percent
Valid yes	85	38.1	60.3	60.3
no	56	25.1	39.7	100.0
Total	141	63.2	100.0	
Missing	41	18.4		
System	41	18.4		
Total	82	36.8		
Total	223	100.0		

educ

	Frequency	Percent	Valid Percent	Cumulative Percent
Valid yes	137	61.4	75.7	75.7
no	44	19.7	24.3	100.0
Total	181	81.2	100.0	
Missing	7	3.1		
System	35	15.7		
Total	42	18.8		
Total	223	100.0		

finance

	Frequency	Percent	Valid Percent	Cumulative Percent
Valid yes	37	16.6	29.6	29.6
no	88	39.5	70.4	100.0
Total	125	56.1	100.0	
Missing	53	23.8		
System	45	20.2		
Total	98	43.9		
Total	223	100.0		

food

	Frequency	Percent	Valid Percent	Cumulative Percent
Valid yes	115	51.6	71.9	71.9
no	45	20.2	28.1	100.0
Total	160	71.7	100.0	
Missing System	20	9.0		
Total	43	19.3		
Total	63	28.3		
Total	223	100.0		

health

	Frequency	Percent	Valid Percent	Cumulative Percent
Valid yes	87	39.0	47.8	47.8
no	95	42.6	52.2	100.0
Total	182	81.6	100.0	
Missing System	9	4.0		
Total	32	14.3		
Total	41	18.4		
Total	223	100.0		

legal

	Frequency	Percent	Valid Percent	Cumulative Percent
Valid yes	57	25.6	41.3	41.3
no	81	36.3	58.7	100.0
Total	138	61.9	100.0	
Missing System	41	18.4		
Total	44	19.7		
Total	85	38.1		
Total	223	100.0		

mental

		Frequency	Percent	Valid Percent	Cumulative Percent
Valid	yes	60	26.9	45.8	45.8
	no	71	31.8	54.2	100.0
	Total	131	58.7	100.0	
Missing	3	49	22.0		
	System	43	19.3		
	Total	92	41.3		
Total		223	100.0		

transportation

		Frequency	Percent	Valid Percent	Cumulative Percent
Valid	yes	97	43.5	61.0	61.0
	no	62	27.8	39.0	100.0
	Total	159	71.3	100.0	
Missing	3	26	11.7		
	System	38	17.0		
	Total	64	28.7		
Total		223	100.0		

Barriers preventing you from getting help:

barcultural

	Frequency	Percent	Valid Percent	Cumulative Percent
Valid yes	50	22.4	100.0	100.0
Missing System	173	77.6		
Total	223	100.0		

barfinance

	Frequency	Percent	Valid Percent	Cumulative Percent
Valid yes	96	43.0	100.0	100.0
Missing System	127	57.0		
Total	223	100.0		

bareducation

	Frequency	Percent	Valid Percent	Cumulative Percent
Valid yes	56	25.1	100.0	100.0
Missing System	167	74.9		
Total	223	100.0		

barlanguage

	Frequency	Percent	Valid Percent	Cumulative Percent
Valid yes	90	40.4	100.0	100.0
Missing System	133	59.6		
Total	223	100.0		

bartransportation

	Frequency	Percent	Valid Percent	Cumulative Percent
Valid yes	45	20.2	100.0	100.0
Missing System	178	79.8		
Total	223	100.0		

barfamily

	Frequency	Percent	Valid Percent	Cumulative Percent
Valid yes	39	17.5	100.0	100.0
Missing System	184	82.5		
Total	223	100.0		

baraccess

	Frequency	Percent	Valid Percent	Cumulative Percent
Valid yes	64	28.7	100.0	100.0
Missing System	159	71.3		
Total	223	100.0		

baravailable

	Frequency	Percent	Valid Percent	Cumulative Percent
Valid yes	75	33.6	100.0	100.0
Missing System	148	66.4		
Total	223	100.0		

barintimidated

	Frequency	Percent	Valid Percent	Cumulative Percent
Valid yes	57	25.6	100.0	100.0
Missing System	166	74.4		
Total	223	100.0		

barother

	Frequency	Percent	Valid Percent	Cumulative Percent
Valid yes	15	6.7	100.0	100.0
Missing System	208	93.3		
Total	223	100.0		

How Secure you feel in the following areas:

secphys3

	Frequency	Percent	Valid Percent	Cumulative Percent
Valid extremely/very secure	69	30.9	33.8	33.8
secure	86	38.6	42.2	76.0
slightly/not secure at all	49	22.0	24.0	100.0
Total	204	91.5	100.0	
Missing System	19	8.5		
Total	223	100.0		

secemo3

	Frequency	Percent	Valid Percent	Cumulative Percent
Valid extremely/very secure	76	34.1	37.6	37.6
secure	79	35.4	39.1	76.7
slightly/not secure at all	47	21.1	23.3	100.0
Total	202	90.6	100.0	
Missing System	21	9.4		
Total	223	100.0		

secfin3

	Frequency	Percent	Valid Percent	Cumulative Percent
Valid extremely/very secure	24	10.8	12.2	12.2
secure	42	18.8	21.3	33.5
slightly/not secure at all	131	58.7	66.5	100.0
Total	197	88.3	100.0	
Missing System	26	11.7		

secfin3

		Frequency	Percent	Valid Percent	Cumulative Percent
Valid	extremely/very secure	24	10.8	12.2	12.2
	secure	42	18.8	21.3	33.5
	slightly/not secure at all	131	58.7	66.5	100.0
	Total	197	88.3	100.0	
Missing	System	26	11.7		
Total		223	100.0		

How often have you faced any type of discrimination:

Often discrimination

		Frequency	Percent	Valid Percent	Cumulative Percent
Valid	very often	21	9.4	10.7	10.7
	often	36	16.1	18.3	28.9
	occasionally	60	26.9	30.5	59.4
	rarely	50	22.4	25.4	84.8
	never	30	13.5	15.2	100.0
	Total	197	88.3	100.0	
Missing	6	8	3.6		
	System	18	8.1		
	Total	26	11.7		
Total		223	100.0		

Degree of discrimination negatively influence

		Frequency	Percent	Valid Percent	Cumulative Percent
Valid	greatly	34	15.2	18.3	18.3
	somewhat	73	32.7	39.2	57.5
	not at all	79	35.4	42.5	100.0
	Total	186	83.4	100.0	
Missing	4	8	3.6		
	System	29	13.0		
	Total	37	16.6		

Degree of discrimination negatively influence

		Frequency	Percent	Valid Percent	Cumulative Percent
Valid	greatly	34	15.2	18.3	18.3
	somewhat	73	32.7	39.2	57.5
	not at all	79	35.4	42.5	100.0
	Total	186	83.4	100.0	
Missing	4	8	3.6		
	System	29	13.0		
	Total	37	16.6		
Total		223	100.0		

Accepted as community member

		Frequency	Percent	Valid Percent	Cumulative Percent
Valid	yes	131	58.7	82.4	82.4
	no	28	12.6	17.6	100.0
	Total	159	71.3	100.0	
Missing	3	42	18.8		
	System	22	9.9		
	Total	64	28.7		
Total		223	100.0		

Crosstab

		age4				Total	
		25 or less	26-35	36-45	45 and above		
child car	yes	Count	15	26	18	7	66
	% within		22.7%	39.4	27.3	10.6%	100.0
	childcar		%	%	%	%	%
	% within		46.9%	60.5	54.5	41.2%	52.8
		age4		%	%		%
no	Count	17	17	15	10	59	
	% within	28.8%	28.8	25.4	16.9%	100.0	
	childcar		%	%	%	%	
	% within	53.1%	39.5	45.5	58.8%	47.2	
		age4		%	%		%
Total	Count	32	43	33	17	125	
	% within	25.6%	34.4	26.4	13.6%	100.0	
	childcar		%	%	%	%	
	% within	100.0	100.0	100.0	100.0%	100.0	
		age4	%	%	%		%

Crosstab

		age4				Total	
		25 or less	26-35	36-45	45 and above		
affho us	yes	Count	17	15	15	9	56
	% within		30.4%	26.8%	26.8%	16.1%	100.0
	affhous		%	%	%	%	%
	% within		47.2%	34.1%	44.1%	39.1%	40.9%
		age4		%	%		%
no	Count	19	29	19	14	81	
	% within	23.5%	35.8%	23.5%	17.3%	100.0	
	affhous		%	%	%	%	
	% within	52.8%	65.9%	55.9%	60.9%	59.1%	
		age4		%	%		%
Total	Count	36	44	34	23	137	
	% within	26.3%	32.1%	24.8%	16.8%	100.0	
	affhous		%	%	%	%	
	% within	100.0%	100.0	100.0	100.0%	100.0	
		age4	%	%	%		%

Crosstab

			age4				Total
			25 or less	26-35	36-45	45 and above	
dviol	yes	Count	20	25	20	12	77
		% within dviol	26.0%	32.5%	26.0%	15.6%	100.0%
		% within age4	74.1%	75.8%	60.6%	60.0%	68.1%
	no	Count	7	8	13	8	36
		% within dviol	19.4%	22.2%	36.1%	22.2%	100.0%
		% within age4	25.9%	24.2%	39.4%	40.0%	31.9%
Total		Count	27	33	33	20	113
		% within dviol	23.9%	29.2%	29.2%	17.7%	100.0%
		% within age4	100.0%	100.0%	100.0%	100.0%	100.0%

Crosstab sig

		age4				Total	
		25 or less	26-35	36-45	45 and above		
drug	yes	Count	21	23	17	9	70
		% within drug	30.0%	32.9%	24.3%	12.9%	100.0%
		% within age4	72.4%	71.9%	50.0%	40.9%	59.8%
	no	Count	8	9	17	13	47
		% within drug	17.0%	19.1%	36.2%	27.7%	100.0%
		% within age4	27.6%	28.1%	50.0%	59.1%	40.2%
Total		Count	29	32	34	22	117
		% within drug	24.8%	27.4%	29.1%	18.8%	100.0%
		% within age4	100.0%	100.0%	100.0%	100.0%	100.0%

Crosstab

		age4				Total	
		25 or less	26-35	36-45	45 and above		
educ	yes	Count	37	33	26	21	117
		% within educ	31.6%	28.2%	22.2%	17.9%	100.0%
		% within age4	90.2%	73.3%	65.0%	77.8%	76.5%
	no	Count	4	12	14	6	36
		% within educ	11.1%	33.3%	38.9%	16.7%	100.0%
		% within age4	9.8%	26.7%	35.0%	22.2%	23.5%
Total		Count	41	45	40	27	153
		% within educ	26.8%	29.4%	26.1%	17.6%	100.0%
		% within age4	100.0%	100.0%	100.0%	100.0%	100.0%

Crosstab

			age4				Total
			25 or less	26-35	36-45	45 and above	
finance	yes	Count	7	9	11	4	31
		% within finance	22.6%	29.0%	35.5%	12.9%	100.0%
		% within age4	31.8%	29.0%	36.7%	17.4%	29.2%
no		Count	15	22	19	19	75
		% within finance	20.0%	29.3%	25.3%	25.3%	100.0%
		% within age4	68.2%	71.0%	63.3%	82.6%	70.8%
Total		Count	22	31	30	23	106
		% within finance	20.8%	29.2%	28.3%	21.7%	100.0%
		% within age4	100.0%	100.0%	100.0%	100.0%	100.0%

Crosstab

		age4				Total	
		25 or less	26-35	36-45	45 and above		
foo	yes	Count	32	32	25	15	104
		% within	30.8%	30.8	24.0	14.4%	100.0
		food		%	%		%
		% within age4	84.2%	76.2	75.8	57.7%	74.8
no	Count	6	10	8	11	35	
	% within	17.1%	28.6	22.9	31.4%	100.0	
	food		%	%		%	
	% within age4	15.8%	23.8	24.2	42.3%	25.2	
Total	Count	38	42	33	26	139	
	% within	27.3%	30.2	23.7	18.7%	100.0	
	food		%	%		%	
	% within age4	100.0	100.0	100.0	100.0%	100.0	

Crosstab

		age4				Total	
		25 or less	26-35	36-45	45 and above		
health	yes	Count	16	18	22	15	71
		% within	22.5	25.4	31.0	21.1%	100.0
		health	%	%	%		0%
		% within age4	42.1	38.3	55.0	53.6%	46.4
no	Count	22	29	18	13	82	
	% within	26.8	35.4	22.0	15.9%	100.0	
	health	%	%	%		0%	
	% within age4	57.9	61.7	45.0	46.4%	53.6	
Total	Count	38	47	40	28	153	
	% within	24.8	30.7	26.1	18.3%	100.0	
	health	%	%	%		0%	
	% within age4	100.0	100.0	100.0	100.0%	100.0	

Crosstab

			age4				Total
			25 or less	26-35	36-45	45 and above	
legal	yes	Count	10	14	14	10	48
		% within legal	20.8%	29.2%	29.2%	20.8%	100.0%
		% within age4	40.0%	35.9%	45.2%	41.7%	40.3%
no	Count	15	25	17	14	71	
	% within legal	21.1%	35.2%	23.9%	19.7%	100.0%	
	% within age4	60.0%	64.1%	54.8%	58.3%	59.7%	
Total	Count	25	39	31	24	119	
	% within legal	21.0%	32.8%	26.1%	20.2%	100.0%	
	% within age4	100.0%	100.0%	100.0%	100.0%	100.0%	

Crosstab

		age4				Total	
		25 or less	26-35	36-45	45 and above		
men tal	yes	Count	12	13	19	8	52
		% within	23.1%	25.0%	36.5%	15.4%	100.0%
		mental	%	%	%	%	%
		% within	54.5%	43.3%	52.8%	34.8%	46.8%
		age4	%	%	%	%	%
no	Count	10	17	17	15	59	
	% within	16.9%	28.8%	28.8%	25.4%	100.0%	
	mental	%	%	%	%	%	
	% within	45.5%	56.7%	47.2%	65.2%	53.2%	
	age4	%	%	%	%	%	
Total	Count	22	30	36	23	111	
	% within	19.8%	27.0%	32.4%	20.7%	100.0%	
	mental	%	%	%	%	%	
	% within	100.0%	100.0%	100.0%	100.0%	100.0%	
	age4	%	%	%	%	%	

Crosstab

		age4				Total	
		25 or less	26-35	36-45	45 and above		
trans p	yes	Count	26	22	21	14	83
		% within	31.3%	26.5%	25.3%	16.9%	100.0%
		transp	%	%	%	%	%
		% within	65.0%	57.9%	60.0%	60.9%	61.0%
	age4	%	%	%	%	%	
no	Count	14	16	14	9	53	
	% within	26.4%	30.2%	26.4%	17.0%	100.0%	
	transp	%	%	%	%	%	
	% within	35.0%	42.1%	40.0%	39.1%	39.0%	
	age4	%	%	%	%	%	
Total	Count	40	38	35	23	136	
	% within	29.4%	27.9%	25.7%	16.9%	100.0%	
	transp	%	%	%	%	%	
	% within	100.0%	100.0%	100.0%	100.0%	100.0%	
	age4	%	%	%	%	%	

Crosstab

			reside				Total
			north coast	north county	slo	south county	
affhous	yes	Count	6	18	11	25	60
		% within affhous	10.0%	30.0%	18.3%	41.7%	100.0%
		% within reside	30.0%	34.6%	36.7%	43.9%	37.7%
no	Count	14	34	19	32	99	
	% within affhous	14.1%	34.3%	19.2%	32.3%	100.0%	
	% within reside	70.0%	65.4%	63.3%	56.1%	62.3%	
Total	Count	20	52	30	57	159	
	% within affhous	12.6%	32.7%	18.9%	35.8%	100.0%	
	% within reside	100.0%	100.0%	100.0%	100.0%	100.0%	

Crosstab

		reside				Total	
		north coast	north county	slo	south county		
child car	yes	Count	18	21	12	28	79
		% within childcar	22.8%	26.6%	15.2%	35.4%	100.0%
		% within reside	69.2%	45.7%	50.0%	54.9%	53.7%
no	Count	8	25	12	23	68	
		% within childcar	11.8%	36.8%	17.6%	33.8%	100.0%
		% within reside	30.8%	54.3%	50.0%	45.1%	46.3%
Total	Count	26	46	24	51	147	
		% within childcar	17.7%	31.3%	16.3%	34.7%	100.0%
		% within reside	100.0%	100.0%	100.0%	100.0%	100.0%

Crosstab

		reside				Total	
		north coast	north county	slo	south county		
divio	yes	Count	15	26	20	32	93
		% within dviol	16.1%	28.0%	21.5%	34.4%	100.0%
		% within reside	78.9%	61.9%	76.9%	68.1%	69.4%
no	Count	4	16	6	15	41	
		% within dviol	9.8%	39.0%	14.6%	36.6%	100.0%
		% within reside	21.1%	38.1%	23.1%	31.9%	30.6%
Total	Count	19	42	26	47	134	
		% within dviol	14.2%	31.3%	19.4%	35.1%	100.0%
		% within reside	100.0%	100.0%	100.0%	100.0%	100.0%

Crosstab

			reside				Total
			north coast	north county	slo	south county	
drug	yes	Count	12	25	15	33	85
		% within drug	14.1%	29.4%	17.6%	38.8%	100.0%
		% within reside	63.2%	53.2%	60.0%	66.0%	60.3%
no	Count	7	22	10	17	56	
		% within drug	12.5%	39.3%	17.9%	30.4%	100.0%
		% within reside	36.8%	46.8%	40.0%	34.0%	39.7%
Total	Count	19	47	25	50	141	
		% within drug	13.5%	33.3%	17.7%	35.5%	100.0%
		% within reside	100.0%	100.0%	100.0%	100.0%	100.0%

Crosstab

		reside				Total	
		north coast	north county	slo	south county		
edu	yes	Count	23	40	27	47	137
		% within	16.8%	29.2%	19.7%	34.3%	100.0%
	educ			%		%	
		% within	88.5%	71.4%	81.8%	71.2%	75.7%
no	Count	3	16	6	19	44	
		% within	6.8%	36.4%	13.6%	43.2%	100.0%
	educ			%		%	
		% within	11.5%	28.6%	18.2%	28.8%	24.3%
Total	Count	26	56	33	66	181	
		% within	14.4%	30.9%	18.2%	36.5%	100.0%
	educ			%		%	
		% within	100.0%	100.0%	100.0%	100.0%	100.0%

Crosstab

		reside				Total	
		north coast	north county	slo	south county		
finan	yes	Count	4	10	8	15	37
		% within	10.8%	27.0%	21.6%	40.5%	100.0%
	ce				%		%
		% within	33.3%	23.3%	33.3%	32.6%	29.6%
no	Count	8	33	16	31	88	
		% within	9.1%	37.5%	18.2%	35.2%	100.0%
	ce			%		%	
		% within	66.7%	76.7%	66.7%	67.4%	70.4%
Total	Count	12	43	24	46	125	
		% within	9.6%	34.4%	19.2%	36.8%	100.0%
	ce			%		%	
		% within	100.0%	100.0%	100.0%	100.0%	100.0%

Crosstab

			reside				Total
			north coast	north county	slo	south county	
food	yes	Count	16	34	20	45	115
		% within food	13.9%	29.6%	17.4%	39.1%	100.0%
		% within reside	69.6%	66.7%	66.7%	80.4%	71.9%
no	Count	7	17	10	11	45	
		% within food	15.6%	37.8%	22.2%	24.4%	100.0%
		% within reside	30.4%	33.3%	33.3%	19.6%	28.1%
Total	Count	23	51	30	56	160	
		% within food	14.4%	31.9%	18.8%	35.0%	100.0%
		% within reside	100.0%	100.0%	100.0%	100.0%	100.0%

Crosstab

		reside				Total	
		north coast	north county	slo	south county		
health	yes	Count	18	28	13	28	87
		% within health	20.7%	32.2%	14.9%	32.2%	100.0%
		% within reside	64.3%	50.0%	37.1%	44.4%	47.8%
no	Count	10	28	22	35	95	
		% within health	10.5%	29.5%	23.2%	36.8%	100.0%
		% within reside	35.7%	50.0%	62.9%	55.6%	52.2%
Total	Count	28	56	35	63	182	
		% within health	15.4%	30.8%	19.2%	34.6%	100.0%
		% within reside	100.0%	100.0%	100.0%	100.0%	100.0%

Crosstab

		reside				Total	
		north coast	north county	slo	south county		
legal	yes	Count	7	20	10	20	57
		% within legal	12.3%	35.1%	17.5%	35.1%	100.0%
		% within reside	41.2%	40.8%	37.0%	44.4%	41.3%
no	Count	10	29	17	25	81	
		% within legal	12.3%	35.8%	21.0%	30.9%	100.0%
		% within reside	58.8%	59.2%	63.0%	55.6%	58.7%
Total	Count	17	49	27	45	138	
		% within legal	12.3%	35.5%	19.6%	32.6%	100.0%
		% within reside	100.0%	100.0%	100.0%	100.0%	100.0%

Crosstab

			reside				Total
			north coast	north county	slo	south county	
mental	yes	Count	10	17	8	25	60
		% within mental	16.7%	28.3%	13.3%	41.7%	100.0%
		% within reside	58.8%	40.5%	36.4%	50.0%	45.8%
no	Count	7	25	14	25	71	
		% within mental	9.9%	35.2%	19.7%	35.2%	100.0%
		% within reside	41.2%	59.5%	63.6%	50.0%	54.2%
Total	Count	17	42	22	50	131	
		% within mental	13.0%	32.1%	16.8%	38.2%	100.0%

Crosstab

			reside				Total
			north coast	north county	slo	south county	
mental	yes	Count	10	17	8	25	60
		% within mental	16.7%	28.3%	13.3%	41.7%	100.0%
		% within reside	58.8%	40.5%	36.4%	50.0%	45.8%
no		Count	7	25	14	25	71
		% within mental	9.9%	35.2%	19.7%	35.2%	100.0%
		% within reside	41.2%	59.5%	63.6%	50.0%	54.2%
		Count	17	42	22	50	131
		% within mental	13.0%	32.1%	16.8%	38.2%	100.0%
		% within reside	100.0%	100.0%	100.0%	100.0%	100.0%

Crosstab

			reside				Total
			north coast	north county	slo	south county	
tran sp	yes	Count	13	27	18	39	97
		% within transp	13.4%	27.8%	18.6%	40.2%	100.0%
		% within reside	72.2%	51.9%	58.1%	67.2%	61.0%
no		Count	5	25	13	19	62
		% within transp	8.1%	40.3%	21.0%	30.6%	100.0%
		% within reside	27.8%	48.1%	41.9%	32.8%	39.0%
Total		Count	18	52	31	58	159
		% within transp	11.3%	32.7%	19.5%	36.5%	100.0%
		% within reside	100.0%	100.0%	100.0%	100.0%	100.0%

Crosstab sig

			secfin3			Total
			extremely/very secure	secure	slightly/not secure at all	
affhous	yes	Count	13	16	27	56
		% within affhous	23.2%	28.6%	48.2%	100.0%
		% within secfin3	59.1%	55.2%	27.6%	37.6%
	no	Count	9	13	71	93
		% within affhous	9.7%	14.0%	76.3%	100.0%
		% within secfin3	40.9%	44.8%	72.4%	62.4%
Total	Count	22	29	98	149	
	% within affhous	14.8%	19.5%	65.8%	100.0%	
	% within secfin3	100.0%	100.0%	100.0%	100.0%	

Crosstab

		secfin3			Total	
		extremel y/very secure	secur e	slightly/n ot secure at all		
childc ar	yes	Count	13	17	41	71
		% within childcar	18.3%	23.9%	57.7%	100.0%
		% within secfin3	59.1%	56.7%	47.7%	51.4%
no	Count	9	13	45	67	
		% within childcar	13.4%	19.4%	67.2%	100.0%
		% within secfin3	40.9%	43.3%	52.3%	48.6%
Total	Count	22	30	86	138	
		% within childcar	15.9%	21.7%	62.3%	100.0%
		% within secfin3	100.0%	100.0%	100.0%	100.0%

Crosstab

		secfin3			Total	
		extremely /very secure	secur e	slightly/n ot secure at all		
dviol il	yes	Count	15	25	48	88
		% within dviol	17.0%	28.4%	54.5%	100.0%
		% within secfin3	75.0%	83.3%	61.5%	68.8%
no	Count	5	5	30	40	
		% within dviol	12.5%	12.5%	75.0%	100.0%
		% within secfin3	25.0%	16.7%	38.5%	31.3%
Total	Count	20	30	78	128	
		% within dviol	15.6%	23.4%	60.9%	100.0%
		% within secfin3	100.0%	100.0%	100.0%	100.0%

Crosstab sig

		secfin3			Total	
		extremely/very secure	secure	slightly/not secure at all		
drug	yes	Count	15	26	37	78
		% within drug	19.2%	33.3%	47.4%	100.0%
		% within secfin3	68.2%	74.3%	50.7%	60.0%
no	Count	7	9	36	52	
		% within drug	13.5%	17.3%	69.2%	100.0%
		% within secfin3	31.8%	25.7%	49.3%	40.0%
Total	Count	22	35	73	130	
		% within drug	16.9%	26.9%	56.2%	100.0%

Crosstab sig

			secfin3			Total
			extremely/very secure	secure	slightly/not secure at all	
drug	yes	Count	15	26	37	78
		% within drug	19.2%	33.3%	47.4%	100.0%
		% within secfin3	68.2%	74.3%	50.7%	60.0%
	no	Count	7	9	36	52
		% within drug	13.5%	17.3%	69.2%	100.0%
		% within secfin3	31.8%	25.7%	49.3%	40.0%
		Count	22	35	73	130
		% within drug	16.9%	26.9%	56.2%	100.0%
		% within secfin3	100.0%	100.0%	100.0%	100.0%

Crosstab

			secfin3			Total
			extremel y/very secure	secur e	slightly/n ot secure at all	
edu c	yes	Count	17	32	79	128
		% within educ	13.3%	25.0 %	61.7%	100.0 %
		% within secfin3	81.0%	86.5 %	71.8%	76.2 %
	no	Count	4	5	31	40
		% within educ	10.0%	12.5 %	77.5%	100.0 %
		% within secfin3	19.0%	13.5 %	28.2%	23.8 %
Total		Count	21	37	110	168
		% within educ	12.5%	22.0 %	65.5%	100.0 %
		% within secfin3	100.0%	100.0 %	100.0%	100.0 %

Crosstab sig

			secfin3			Total
			extremely/very secure	secure	slightly/not secure at all	
finance	yes	Count	13	8	14	35
		% within finance	37.1%	22.9%	40.0%	100.0%
		% within secfin3	59.1%	38.1%	19.2%	30.2%
no	no	Count	9	13	59	81
		% within finance	11.1%	16.0%	72.8%	100.0%
		% within secfin3	40.9%	61.9%	80.8%	69.8%
Total	Total	Count	22	21	73	116
		% within finance	19.0%	18.1%	62.9%	100.0%
		% within secfin3	100.0%	100.0%	100.0%	100.0%

Crosstab sig

		secfin3			Total	
		extremel y/very secure	secure	slightly/not secure at all		
foo	yes	Count	18	28	65	111
		% within food	16.2%	25.2%	58.6%	100.0%
		% within secfin3	81.8%	87.5%	67.0%	73.5%
	no	Count	4	4	32	40
		% within food	10.0%	10.0%	80.0%	100.0%
		% within secfin3	18.2%	12.5%	33.0%	26.5%
Total		Count	22	32	97	151
		% within food	14.6%	21.2%	64.2%	100.0%
		% within secfin3	100.0%	100.0%	100.0%	100.0%

Crosstab sig

		secfin3			Total	
		extremel y/very secure	secure	slightly/n ot secure at all		
heal	yes	Count	15	23	43	81
		% within health	18.5%	28.4%	53.1%	100.0%
		% within secfin3	65.2%	63.9%	38.7%	47.6%
	no	Count	8	13	68	89
		% within health	9.0%	14.6%	76.4%	100.0%
		% within secfin3	34.8%	36.1%	61.3%	52.4%
Total		Count	23	36	111	170
		% within health	13.5%	21.2%	65.3%	100.0%
		% within secfin3	100.0%	100.0%	100.0%	100.0%

Crosstab

		secfin3			Total	
		extremely/very secure	secure	slightly/not secure at all		
legal	yes	Count	11	15	29	55
		% within legal	20.0%	27.3%	52.7%	100.0%
		% within secfin3	55.0%	53.6%	34.9%	42.0%
	no	Count	9	13	54	76
		% within legal	11.8%	17.1%	71.1%	100.0%
		% within secfin3	45.0%	46.4%	65.1%	58.0%
Total		Count	20	28	83	131
		% within legal	15.3%	21.4%	63.4%	100.0%

Crosstab

			secfin3			Total
			extremely/very secure	secure	slightly/not secure at all	
legal	yes	Count	11	15	29	55
		% within legal	20.0%	27.3%	52.7%	100.0%
		% within secfin3	55.0%	53.6%	34.9%	42.0%
	no	Count	9	13	54	76
		% within legal	11.8%	17.1%	71.1%	100.0%
		% within secfin3	45.0%	46.4%	65.1%	58.0%
		Count	20	28	83	131
		% within legal	15.3%	21.4%	63.4%	100.0%
		% within secfin3	100.0%	100.0%	100.0%	100.0%

Crosstab sig

		secfin3			Total
		extremel y/very secure	secur e	slightly/n ot secure at all	
ment yes al	Count	14	16	28	58
	% within mental	24.1%	27.6 %	48.3%	100.0 %
	% within secfin3	70.0%	64.0 %	35.4%	46.8 %
no	Count	6	9	51	66
	% within mental	9.1%	13.6 %	77.3%	100.0 %
	% within secfin3	30.0%	36.0 %	64.6%	53.2 %
Total	Count	20	25	79	124
	% within mental	16.1%	20.2 %	63.7%	100.0 %
	% within secfin3	100.0%	100.0 %	100.0%	100.0 %

Crosstab

			secfin3			Total
			extremely/very secure	secure	slightly/not secure at all	
transp	yes	Count	17	22	54	93
		% within transp	18.3%	23.7%	58.1%	100.0%
		% within secfin3	77.3%	66.7%	56.8%	62.0%
	no	Count	5	11	41	57
		% within transp	8.8%	19.3%	71.9%	100.0%
		% within secfin3	22.7%	33.3%	43.2%	38.0%
Total		Count	22	33	95	150
		% within transp	14.7%	22.0%	63.3%	100.0%
		% within secfin3	100.0%	100.0%	100.0%	100.0%

Crosstab

		educ6					Total		
		less than high school	high school/ged	some college	2 year college degree	4 year college degree		graduate degree	
barcult	yes	Count	10	12	9	5	6	4	46
		% within barcult	21.7%	26.1%	19.6%	10.9%	13.0%	8.7%	100.0%
		% within educ6	100.0%	100.0%	100.0%	100.0%	100.0%	100.0%	100.0%
Total		Count	10	12	9	5	6	4	46
		% within barcult	21.7%	26.1%	19.6%	10.9%	13.0%	8.7%	100.0%
		% within educ6	100.0%	100.0%	100.0%	100.0%	100.0%	100.0%	100.0%

Crosstab

			educ6					Total
			less than high school	high school/ged	some college	2 year college degree	4 year college degree	
barfin yes	Count	14	34	24	10	6	4	92
	% within barfin	15.2%	37.0%	26.1%	10.9%	6.5%	4.3%	100.0%
	% within educ6	100.0%	100.0%	100.0%	100.0%	100.0%	100.0%	100.0%
Total	Count	14	34	24	10	6	4	92
	% within barfin	15.2%	37.0%	26.1%	10.9%	6.5%	4.3%	100.0%
	% within educ6	100.0%	100.0%	100.0%	100.0%	100.0%	100.0%	100.0%

Crosstab

		educ6						Total
		less than high school	high school/ged	some college	2 year college degree	4 year college degree	graduate degree	
bareduc yes	Count	12	19	10	5	4	1	51
	% within bareduc	23.5%	37.3%	19.6%	9.8%	7.8%	2.0%	100.0%
	% within educ6	100.0%	100.0%	100.0%	100.0%	100.0%	100.0%	100.0%
Total	Count	12	19	10	5	4	1	51
	% within bareduc	23.5%	37.3%	19.6%	9.8%	7.8%	2.0%	100.0%
	% within educ6	100.0%	100.0%	100.0%	100.0%	100.0%	100.0%	100.0%

Crosstab

		educ6						Total
		less than high school	high school/ged	some college	2 year college degree	4 year college degree	graduate degree	
barlang yes	Count	27	33	9	6	3	3	81
	% within barlang	33.3%	40.7%	11.1%	7.4%	3.7%	3.7%	100.0%
	% within educ6	100.0%	100.0%	100.0%	100.0%	100.0%	100.0%	100.0%
Total	Count	27	33	9	6	3	3	81
	% within barlang	33.3%	40.7%	11.1%	7.4%	3.7%	3.7%	100.0%
	% within educ6	100.0%	100.0%	100.0%	100.0%	100.0%	100.0%	100.0%

Crosstab

		educ6					Total
		less than high school	high school/ged	some college	2 year college degree	graduate degree	
bartrans yes	Count	8	19	5	5	1	38
	% within bartrans	21.1%	50.0%	13.2%	13.2%	2.6%	100.0%
	% within educ6	100.0%	100.0%	100.0%	100.0%	100.0%	100.0%
Total	Count	8	19	5	5	1	38
	% within bartrans	21.1%	50.0%	13.2%	13.2%	2.6%	100.0%

Crosstab

			educ6					Total
			less than high school	high school/ged	some college	2 year college degree	graduate degree	
bartrans	yes	Count	8	19	5	5	1	38
		% within bartrans	21.1%	50.0%	13.2%	13.2%	2.6%	100.0%
		% within educ6	100.0%	100.0%	100.0%	100.0%	100.0%	100.0%
		Count	8	19	5	5	1	38
		% within bartrans	21.1%	50.0%	13.2%	13.2%	2.6%	100.0%
		% within educ6	100.0%	100.0%	100.0%	100.0%	100.0%	100.0%

Crosstab

			educ6					Total	
			less than high school	high school/ged	some college	2 year college degree	4 year college degree		graduate degree
barfamil	yes	Count	9	12	5	4	5	1	36
		% within barfamil	25.0%	33.3%	13.9%	11.1%	13.9%	2.8%	100.0%
		% within educ6	100.0%	100.0%	100.0%	100.0%	100.0%	100.0%	100.0%
Total		Count	9	12	5	4	5	1	36
		% within barfamil	25.0%	33.3%	13.9%	11.1%	13.9%	2.8%	100.0%
		% within educ6	100.0%	100.0%	100.0%	100.0%	100.0%	100.0%	100.0%

Crosstab

		educ6						Total
		less than high school	high school/ged	some college	2 year college degree	4 year college degree	graduate degree	
baracces yes	Count	12	16	13	6	7	5	59
	% within baracces	20.3%	27.1%	22.0%	10.2%	11.9%	8.5%	100.0%
	% within educ6	100.0%	100.0%	100.0%	100.0%	100.0%	100.0%	100.0%
Total	Count	12	16	13	6	7	5	59
	% within baracces	20.3%	27.1%	22.0%	10.2%	11.9%	8.5%	100.0%
	% within educ6	100.0%	100.0%	100.0%	100.0%	100.0%	100.0%	100.0%

Crosstab

		educ6					Total	
		less than high school	high school/ged	some college	2 year college degree	4 year college degree		graduate degree
baravail yes	Count	10	27	17	5	7	5	71
	% within baravail	14.1%	38.0%	23.9%	7.0%	9.9%	7.0%	100.0%
	% within educ6	100.0%	100.0%	100.0%	100.0%	100.0%	100.0%	100.0%
Total	Count	10	27	17	5	7	5	71
	% within baravail	14.1%	38.0%	23.9%	7.0%	9.9%	7.0%	100.0%
	% within educ6	100.0%	100.0%	100.0%	100.0%	100.0%	100.0%	100.0%

Crosstab

		educ6					Total	
		less than high school	high school/ged	some college	2 year college degree	4 year college degree		graduate degree
barintim yes	Count	9	19	11	6	5	3	53
	% within barintim	17.0%	35.8%	20.8%	11.3%	9.4%	5.7%	100.0%
	% within educ6	100.0%	100.0%	100.0%	100.0%	100.0%	100.0%	100.0%
Total	Count	9	19	11	6	5	3	53
	% within barintim	17.0%	35.8%	20.8%	11.3%	9.4%	5.7%	100.0%
	% within educ6	100.0%	100.0%	100.0%	100.0%	100.0%	100.0%	100.0%

Crosstab

			age4				Total
			25 or less	26-35	36-45	45 and above	
barcult yes	Count		5	16	15	5	41
	% within barcult		12.2%	39.0%	36.6%	12.2%	100.0%
	% within age4		100.0%	100.0%	100.0%	100.0%	100.0%
Total	Count		5	16	15	5	41
	% within barcult		12.2%	39.0%	36.6%	12.2%	100.0%

Crosstab

			age4				Total
			25 or less	26-35	36-45	45 and above	
barcult	yes	Count	5	16	15	5	41
		% within barcult	12.2%	39.0%	36.6%	12.2%	100.0%
		% within age4	100.0%	100.0%	100.0%	100.0%	100.0%
Count			5	16	15	5	41
% within barcult			12.2%	39.0%	36.6%	12.2%	100.0%
% within age4			100.0%	100.0%	100.0%	100.0%	100.0%

Crosstab

		age4				Total	
		25 or less	26-35	36-45	45 and above		
barf in	yes	Count	22	27	25	12	86
		% within barfin	25.6%	31.4%	29.1%	14.0%	100.0%
		% within age4	100.0%	100.0%	100.0%	100.0%	100.0%
Total	Count	22	27	25	12	86	
	% within barfin	25.6%	31.4%	29.1%	14.0%	100.0%	
	% within age4	100.0%	100.0%	100.0%	100.0%	100.0%	

Crosstab

		age4				Total	
		25 or less	26-35	36-45	45 and above		
bareduc	yes	Count	9	21	12	5	47
		% within bareduc	19.1%	44.7%	25.5%	10.6%	100.0%
		% within age4	100.0%	100.0%	100.0%	100.0%	100.0%
Total		Count	9	21	12	5	47
		% within bareduc	19.1%	44.7%	25.5%	10.6%	100.0%
		% within age4	100.0%	100.0%	100.0%	100.0%	100.0%

Crosstab

			age4				Total
			25 or less	26-35	36-45	45 and above	
barlang	yes	Count	15	32	23	9	79
		% within barlang	19.0%	40.5%	29.1%	11.4%	100.0%
		% within age4	100.0%	100.0%	100.0%	100.0%	100.0%
Total		Count	15	32	23	9	79
		% within barlang	19.0%	40.5%	29.1%	11.4%	100.0%
		% within age4	100.0%	100.0%	100.0%	100.0%	100.0%

Crosstab

			age4				Total
			25 or less	26-35	36-45	45 and above	
bartrans	yes	Count	14	16	6	6	42
		% within bartrans	33.3%	38.1%	14.3%	14.3%	100.0%
		% within age4	100.0%	100.0%	100.0%	100.0%	100.0%
Total		Count	14	16	6	6	42
		% within bartrans	33.3%	38.1%	14.3%	14.3%	100.0%
		% within age4	100.0%	100.0%	100.0%	100.0%	100.0%

Crosstab

		age4				Total
		25 or less	26-35	36-45	45 and above	
barfam mil	yes Count	7	11	9	3	30
	% within barfam	23.3%	36.7%	30.0%	10.0%	100.0%
	% within age4	100.0%	100.0%	100.0%	100.0%	100.0%
		%	%	%	%	%
Total	Count	7	11	9	3	30
	% within barfam	23.3%	36.7%	30.0%	10.0%	100.0%
	% within age4	100.0%	100.0%	100.0%	100.0%	100.0%
		%	%	%	%	%

Crosstab

		age4				Total
		25 or less	26-35	36-45	45 and above	
baraces	yes Count	17	16	11	8	52
	% within baraces	32.7%	30.8%	21.2%	15.4%	100.0%
	% within age4	100.0%	100.0%	100.0%	100.0%	100.0%
		%	%	%	%	%
Total	Count	17	16	11	8	52
	% within baraces	32.7%	30.8%	21.2%	15.4%	100.0%
	% within age4	100.0%	100.0%	100.0%	100.0%	100.0%
		%	%	%	%	%

Crosstab

		age4				Total
		25 or less	26-35	36-45	45 and above	
baravail	yes Count	21	22	9	13	65
	% within baravail	32.3%	33.8%	13.8%	20.0%	100.0%
	% within age4	100.0%	100.0%	100.0%	100.0%	100.0%
Total	Count	21	22	9	13	65
	% within baravail	32.3%	33.8%	13.8%	20.0%	100.0%
	% within age4	100.0%	100.0%	100.0%	100.0%	100.0%

Crosstab

		age4				Total
		25 or less	26-35	36-45	45 and above	
barintim	yes Count	14	17	9	7	47
	% within barintim	29.8%	36.2%	19.1%	14.9%	100.0%
	% within age4	100.0%	100.0%	100.0%	100.0%	100.0%
Total	Count	14	17	9	7	47
	% within barintim	29.8%	36.2%	19.1%	14.9%	100.0%
	% within age4	100.0%	100.0%	100.0%	100.0%	100.0%

Crosstab

		reside				Total	
		north coast	north county	slo	south county		
barc ult	yes	Count	4	16	9	21	50
		% within barc	8.0%	32.0%	18.0%	42.0%	100.0%
		% within reside	100.0%	100.0%	100.0%	100.0%	100.0%
Total		Count	4	16	9	21	50
		% within barc	8.0%	32.0%	18.0%	42.0%	100.0%
		% within reside	100.0%	100.0%	100.0%	100.0%	100.0%

Crosstab

		reside				Total	
		north coast	north county	slo	south county		
barfi n	yes	Count	11	42	15	28	96
		% within barfin	11.5%	43.8%	15.6%	29.2%	100.0%
		% within reside	100.0%	100.0%	100.0%	100.0%	100.0%
Total		Count	11	42	15	28	96
		% within barfin	11.5%	43.8%	15.6%	29.2%	100.0%
		% within reside	100.0%	100.0%	100.0%	100.0%	100.0%

Crosstab

		reside				Total	
		north coast	north county	slo	south county		
bareduc	yes	Count	5	18	13	20	56
		% within bareduc	8.9%	32.1%	23.2%	35.7%	100.0%
		% within reside	100.0%	100.0%	100.0%	100.0%	100.0%
Total		Count	5	18	13	20	56
		% within bareduc	8.9%	32.1%	23.2%	35.7%	100.0%
		% within reside	100.0%	100.0%	100.0%	100.0%	100.0%

Crosstab

		reside				Total	
		north coast	north county	slo	south county		
barlang	yes	Count	16	30	20	24	90
		% within barlang	17.8%	33.3%	22.2%	26.7%	100.0%
		% within reside	100.0%	100.0%	100.0%	100.0%	100.0%
Total		Count	16	30	20	24	90
		% within barlang	17.8%	33.3%	22.2%	26.7%	100.0%

Crosstab

			reside				Total
			north coast	north county	slo	south county	
barlang	yes	Count	16	30	20	24	90
		% within barlang	17.8%	33.3%	22.2%	26.7%	100.0%
		% within reside	100.0%	100.0%	100.0%	100.0%	100.0%
Count			16	30	20	24	90
% within barlang			17.8%	33.3%	22.2%	26.7%	100.0%
% within reside			100.0%	100.0%	100.0%	100.0%	100.0%

Crosstab

		reside				Total	
		north coast	north county	slo	south county		
bartra ns	yes	Count	6	20	8	11	45
		% within bartrans	13.3%	44.4%	17.8%	24.4%	100.0%
		% within reside	100.0%	100.0%	100.0%	100.0%	100.0%
Total	Count	6	20	8	11	45	
	% within bartrans	13.3%	44.4%	17.8%	24.4%	100.0%	
	% within reside	100.0%	100.0%	100.0%	100.0%	100.0%	

Crosstab

			reside				Total
			north coast	north county	slo	south county	
barfamil	yes	Count	6	10	4	19	39
		% within barfamil	15.4%	25.6%	10.3%	48.7%	100.0%
		% within reside	100.0%	100.0%	100.0%	100.0%	100.0%
Total		Count	6	10	4	19	39
		% within barfamil	15.4%	25.6%	10.3%	48.7%	100.0%
		% within reside	100.0%	100.0%	100.0%	100.0%	100.0%

Crosstab

			reside				Total
			north coast	north county	slo	south county	
baracces	yes	Count	9	23	14	18	64
		% within baracces	14.1%	35.9%	21.9%	28.1%	100.0%
		% within reside	100.0%	100.0%	100.0%	100.0%	100.0%
Total		Count	9	23	14	18	64
		% within baracces	14.1%	35.9%	21.9%	28.1%	100.0%
		% within reside	100.0%	100.0%	100.0%	100.0%	100.0%

Crosstab

			reside				Total
			north coast	north county	slo	south county	
baravail	yes	Count	9	28	16	22	75
		% within baravail	12.0%	37.3%	21.3%	29.3%	100.0%
		% within reside	100.0%	100.0%	100.0%	100.0%	100.0%
Total		Count	9	28	16	22	75
		% within baravail	12.0%	37.3%	21.3%	29.3%	100.0%
		% within reside	100.0%	100.0%	100.0%	100.0%	100.0%

Crosstab

		reside				Total
		north coast	north county	slo	south county	
barin yes tim	Count	6	20	14	17	57
	% within barintim	10.5%	35.1%	24.6%	29.8%	100.0%
	% within barin	100.0%	100.0%	100.0%	100.0%	100.0%
	% within reside	%	%	%	%	%
Total	Count	6	20	14	17	57
	% within barintim	10.5%	35.1%	24.6%	29.8%	100.0%
	% within barin	100.0%	100.0%	100.0%	100.0%	100.0%
	% within reside	%	%	%	%	%

Crosstab

		secfin3			Total
		extremely/very secure	secure	slightly/not secure at all	
barcul yes t	Count	5	6	36	47
	% within barcult	10.6%	12.8%	76.6%	100.0%
	% within barin	100.0%	100.0%	100.0%	100.0%
	% within secfin3	%	%	%	%
Total	Count	5	6	36	47
	% within barcult	10.6%	12.8%	76.6%	100.0%
	% within barin	100.0%	100.0%	100.0%	100.0%
	% within secfin3	%	%	%	%

Crosstab

			secfin3			Total
			extremely/very secure	secure	slightly/not secure at all	
barfin yes	Count	8	20	61	89	
	% within barfin	9.0%	22.5%	68.5%	100.0%	
	% within secfin3	100.0%	100.0%	100.0%	100.0%	
Total	Count	8	20	61	89	
	% within barfin	9.0%	22.5%	68.5%	100.0%	
	% within secfin3	100.0%	100.0%	100.0%	100.0%	

Crosstab

			secfin3			Total
			extremely/very secure	secure	slightly/not secure at all	
bareduc yes	Count	5	11	36	52	
	% within bareduc	9.6%	21.2%	69.2%	100.0%	
	% within secfin3	100.0%	100.0%	100.0%	100.0%	
Total	Count	5	11	36	52	

% within bareduc	9.6%	21.2%	69.2%	100.0%
% within secfin3	100.0%	100.0%	100.0%	100.0%

Crosstab

		secfin3			Total
		extremely/ very secure	secure	slightly/not secure at all	
barlang yes	Count	7	13	65	85
	% within barlang	8.2%	15.3%	76.5%	100.0%
	% within secfin3	100.0%	100.0%	100.0%	100.0%
Total	Count	7	13	65	85
	% within barlang	8.2%	15.3%	76.5%	100.0%
	% within secfin3	100.0%	100.0%	100.0%	100.0%

Crosstab

		secfin3			Total
		extremely/ very secure	secure	slightly/not secure at all	
bartrans yes	Count	2	8	29	39
	% within bartrans	5.1%	20.5%	74.4%	100.0%
	% within secfin3	100.0%	100.0%	100.0%	100.0%
Total	Count	2	8	29	39
	% within bartrans	5.1%	20.5%	74.4%	100.0%
	% within secfin3	100.0%	100.0%	100.0%	100.0%

Crosstab

		secfin3			Total
		extremely/ve ry secure	secure	slightly/not secure at all	
barfamil yes	Count	6	1	31	38
	% within barfamil	15.8%	2.6%	81.6%	100.0%
	% within secfin3	100.0%	100.0%	100.0%	100.0%
Total	Count	6	1	31	38
	% within barfamil	15.8%	2.6%	81.6%	100.0%
	% within secfin3	100.0%	100.0%	100.0%	100.0%

Crosstab

		secfin3			Total
		extremely /very secure	secur e	slightly/n ot secure at all	
baracc yes es	Count	5	11	45	61
	% within baracces	8.2%	18.0%	73.8%	100.0%
	% within secfin3	100.0%	100.0%	100.0%	100.0%
	%				
Total	Count	5	11	45	61
	% within baracces	8.2%	18.0%	73.8%	100.0%
	% within secfin3	100.0%	100.0%	100.0%	100.0%
	%				

Crosstab

		secfin3			Total
		extremely /very secure	secur e	slightly/n ot secure at all	
barav yes ail	Count	5	16	51	72
	% within baravail	6.9%	22.2%	70.8%	100.0%
	% within secfin3	100.0%	100.0%	100.0%	100.0%
	%				
Total	Count	5	16	51	72
	% within baravail	6.9%	22.2%	70.8%	100.0%
	% within secfin3	100.0%	100.0%	100.0%	100.0%
	%				

Crosstab

		secfin3			Total
		extremely/very secure	secure	slightly/not secure at all	
barintim yes	Count	4	10	39	53
	% within barintim	7.5%	18.9%	73.6%	100.0%
	% within secfin3	100.0%	100.0%	100.0%	100.0%
Total	Count	4	10	39	53
	% within barintim	7.5%	18.9%	73.6%	100.0%
	% within secfin3	100.0%	100.0%	100.0%	100.0%

Secure and age no sig

Secure and reside no sig

Secure fin and educ can't determine

Crosstab

			educ4				Total
			less than high school	high school/ged	some-2 year degree	4 year degree or higher	
secphys3	extremely/very secure	Count	7	14	27	15	63
		% within secphys3	11.1%	22.2%	42.9%	23.8%	100.0%
		% within educ4	17.9%	25.5%	43.5%	51.7%	34.1%
	secure	Count	15	26	27	11	79
		% within secphys3	19.0%	32.9%	34.2%	13.9%	100.0%
		% within educ4	38.5%	47.3%	43.5%	37.9%	42.7%
	slightly/not secure at all	Count	17	15	8	3	43
		% within secphys3	39.5%	34.9%	18.6%	7.0%	100.0%
		% within educ4	43.6%	27.3%	12.9%	10.3%	23.2%
Total	Count	39	55	62	29	185	
	% within secphys3	21.1%	29.7%	33.5%	15.7%	100.0%	
	% within educ4	100.0%	100.0%	100.0%	100.0%	100.0%	

Crosstab

			educ4				Total
			less than high school	high school/ged	some-2 year degree	4 year degree or higher	
secemo3	extremely/very secure	Count	7	17	30	15	69
		% within secemo3	10.1%	24.6%	43.5%	21.7%	100.0%
		% within educ4	18.9%	30.9%	48.4%	50.0%	37.5%
	secure	Count	15	26	22	8	71
		% within secemo3	21.1%	36.6%	31.0%	11.3%	100.0%
		% within educ4	40.5%	47.3%	35.5%	26.7%	38.6%
	slightly/not secure at all	Count	15	12	10	7	44
		% within secemo3	34.1%	27.3%	22.7%	15.9%	100.0%
		% within educ4	40.5%	21.8%	16.1%	23.3%	23.9%
Total	Count	37	55	62	30	184	
	% within secemo3	20.1%	29.9%	33.7%	16.3%	100.0%	
	% within educ4	100.0%	100.0%	100.0%	100.0%	100.0%	

oftdis3 * age4 Crosstabulation no sig

			age4				Total
			25 or less	26-35	36-45	45 and above	
oftdis3	often-very often	Count	7	20	10	11	48
		% within oftdis3	14.6%	41.7%	20.8%	22.9%	100.0%
		% within age4	16.7%	37.0%	23.3%	36.7%	28.4%
	occasionally	Count	17	15	13	6	51
		% within oftdis3	33.3%	29.4%	25.5%	11.8%	100.0%
		% within age4	40.5%	27.8%	30.2%	20.0%	30.2%
	rarely-never	Count	18	19	20	13	70
		% within oftdis3	25.7%	27.1%	28.6%	18.6%	100.0%
		% within age4	42.9%	35.2%	46.5%	43.3%	41.4%
Total	Count	42	54	43	30	169	
	% within oftdis3	24.9%	32.0%	25.4%	17.8%	100.0%	
	% within age4	100.0%	100.0%	100.0%	100.0%	100.0%	

oftdis3 * reside Crosstabulation no sig

			reside				Total
			north coast	north county	slo	south county	
oftdis3	often-very often	Count	6	17	10	24	57
		% within oftdis3	10.5%	29.8%	17.5%	42.1%	100.0%
		% within reside	20.0%	27.9%	25.6%	35.8%	28.9%
	occasionally	Count	5	24	14	17	60
		% within oftdis3	8.3%	40.0%	23.3%	28.3%	100.0%
		% within reside	16.7%	39.3%	35.9%	25.4%	30.5%
	rarely-never	Count	19	20	15	26	80
		% within oftdis3	23.8%	25.0%	18.8%	32.5%	100.0%
		% within reside	63.3%	32.8%	38.5%	38.8%	40.6%
Total	Count	30	61	39	67	197	
	% within oftdis3	15.2%	31.0%	19.8%	34.0%	100.0%	
	% within reside	100.0%	100.0%	100.0%	100.0%	100.0%	

oftdis3 * secfin3 Crosstabulation no sig

			secfin3			Total
			extremely/very secure	secure	slightly/not secure at all	
oftdis3	often-very often	Count	10	12	33	55
		% within oftdis3	18.2%	21.8%	60.0%	100.0%
		% within secfin3	45.5%	30.0%	26.4%	29.4%
	occasionally	Count	4	11	40	55
		% within oftdis3	7.3%	20.0%	72.7%	100.0%
		% within secfin3	18.2%	27.5%	32.0%	29.4%
	rarely-never	Count	8	17	52	77
		% within oftdis3	10.4%	22.1%	67.5%	100.0%
		% within secfin3	36.4%	42.5%	41.6%	41.2%
Total	Count	22	40	125	187	
	% within oftdis3	11.8%	21.4%	66.8%	100.0%	
	% within secfin3	100.0%	100.0%	100.0%	100.0%	

disinflu * oftdis3 Crosstabulation sig

			oftdis3			Total
			often-very often	occasionally	rarely-never	
disinflu	greatly	Count	23	8	2	33
		% within disinflu	69.7%	24.2%	6.1%	100.0%
		% within oftdis3	41.1%	14.0%	2.9%	18.0%
	somewhat	Count	20	36	17	73
		% within disinflu	27.4%	49.3%	23.3%	100.0%
		% within oftdis3	35.7%	63.2%	24.3%	39.9%
	not at all	Count	13	13	51	77
		% within disinflu	16.9%	16.9%	66.2%	100.0%
		% within oftdis3	23.2%	22.8%	72.9%	42.1%
Total	Count	56	57	70	183	
	% within disinflu	30.6%	31.1%	38.3%	100.0%	
	% within oftdis3	100.0%	100.0%	100.0%	100.0%	

oftdis3 * educ4 Crosstabulation no sig

			educ4				Total
			less than high school	high school/ged	some-2 year degree	4 year degree or higher	
oftdis3	often-very often	Count	11	14	18	11	54
		% within oftdis3	20.4%	25.9%	33.3%	20.4%	100.0%
		% within educ4	31.4%	25.5%	28.6%	39.3%	29.8%
	occasionally	Count	8	21	15	9	53
		% within oftdis3	15.1%	39.6%	28.3%	17.0%	100.0%
		% within educ4	22.9%	38.2%	23.8%	32.1%	29.3%
	rarely-never	Count	16	20	30	8	74
		% within oftdis3	21.6%	27.0%	40.5%	10.8%	100.0%
		% within educ4	45.7%	36.4%	47.6%	28.6%	40.9%
Total	Count	35	55	63	28	181	
	% within oftdis3	19.3%	30.4%	34.8%	15.5%	100.0%	
	% within educ4	100.0%	100.0%	100.0%	100.0%	100.0%	

How discrimination influences and education cross tab - no sig

disinflu * age4 Crosstabulation no sig

			age4				Total
			25 or less	26-35	36-45	45 and above	
disinflu	greatly	Count	2	12	8	8	30
		% within disinflu	6.7%	40.0%	26.7%	26.7%	100.0%
		% within age4	4.8%	23.5%	19.0%	30.8%	18.6%
	somewhat	Count	19	23	13	7	62
		% within disinflu	30.6%	37.1%	21.0%	11.3%	100.0%
		% within age4	45.2%	45.1%	31.0%	26.9%	38.5%
	not at all	Count	21	16	21	11	69
		% within disinflu	30.4%	23.2%	30.4%	15.9%	100.0%
		% within age4	50.0%	31.4%	50.0%	42.3%	42.9%
Total	Count	42	51	42	26	161	

	% within disinflu	26.1%	31.7%	26.1%	16.1%	100.0%
	% within age4	100.0%	100.0%	100.0%	100.0%	100.0%

accmemb * age4 Crosstabulation no sig .051

			age4				Total
			25 or less	26-35	36-45	45 and above	
accmemb	yes	Count	38	33	30	17	118
		% within accmemb	32.2%	28.0%	25.4%	14.4%	100.0%
		% within age4	92.7%	80.5%	88.2%	68.0%	83.7%
no	no	Count	3	8	4	8	23
		% within accmemb	13.0%	34.8%	17.4%	34.8%	100.0%
		% within age4	7.3%	19.5%	11.8%	32.0%	16.3%
Total	Total	Count	41	41	34	25	141
		% within accmemb	29.1%	29.1%	24.1%	17.7%	100.0%
		% within age4	100.0%	100.0%	100.0%	100.0%	100.0%

accmemb * reside Crosstabulation no sig

			reside				Total
			north coast	north county	slo	south county	
accmemb	yes	Count	27	36	27	41	131
		% within accmemb	20.6%	27.5%	20.6%	31.3%	100.0%
		% within reside	96.4%	78.3%	81.8%	78.8%	82.4%
no	no	Count	1	10	6	11	28
		% within accmemb	3.6%	35.7%	21.4%	39.3%	100.0%
		% within reside	3.6%	21.7%	18.2%	21.2%	17.6%
Total	Total	Count	28	46	33	52	159
		% within accmemb	17.6%	28.9%	20.8%	32.7%	100.0%
		% within reside	100.0%	100.0%	100.0%	100.0%	100.0%

Accepted as a community member and educ no sig

Accepted as a community member and secfin no sig

accmemb * oftdis3 Crosstabulation sig

			oftdis3			Total
			often-very often	occasionally	rarely-never	
accmemb	yes	Count	27	29	67	123
		% within accmemb	22.0%	23.6%	54.5%	100.0%
		% within oftdis3	62.8%	78.4%	95.7%	82.0%
	no	Count	16	8	3	27
		% within accmemb	59.3%	29.6%	11.1%	100.0%
		% within oftdis3	37.2%	21.6%	4.3%	18.0%
Total		Count	43	37	70	150
		% within accmemb	28.7%	24.7%	46.7%	100.0%
		% within oftdis3	100.0%	100.0%	100.0%	100.0%

Crosstab sig

			oftdis3			Total
			often-very often	occasionally	rarely-never	
secphys3	extremely/very secure	Count	20	14	31	65
		% within secphys3	30.8%	21.5%	47.7%	100.0%
		% within oftdis3	35.7%	23.7%	39.7%	33.7%
secure		Count	18	25	38	81
		% within secphys3	22.2%	30.9%	46.9%	100.0%
		% within oftdis3	32.1%	42.4%	48.7%	42.0%
slightly/not secure at all		Count	18	20	9	47
		% within secphys3	38.3%	42.6%	19.1%	100.0%
		% within oftdis3	32.1%	33.9%	11.5%	24.4%
Total		Count	56	59	78	193
		% within secphys3	29.0%	30.6%	40.4%	100.0%
		% within oftdis3	100.0%	100.0%	100.0%	100.0%

Crosstab sig

			oftdis3			Total
			often-very often	occasionally	rarely-never	
secemo3	extremely/very secure	Count	19	17	37	73
		% within secemo3	26.0%	23.3%	50.7%	100.0%
		% within oftdis3	35.2%	29.8%	46.3%	38.2%
secure		Count	17	22	34	73
		% within secemo3	23.3%	30.1%	46.6%	100.0%
		% within oftdis3	31.5%	38.6%	42.5%	38.2%
slightly/not secure at all		Count	18	18	9	45
		% within secemo3	40.0%	40.0%	20.0%	100.0%
		% within oftdis3	33.3%	31.6%	11.3%	23.6%
Total		Count	54	57	80	191
		% within secemo3	28.3%	29.8%	41.9%	100.0%
		% within oftdis3	100.0%	100.0%	100.0%	100.0%