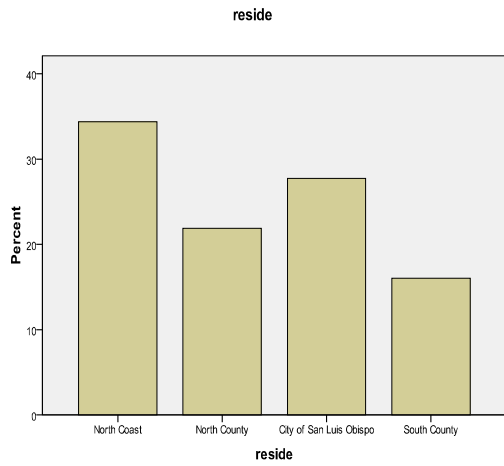


Senior Women over the age of 60 Data Tables

Demographics:



reside

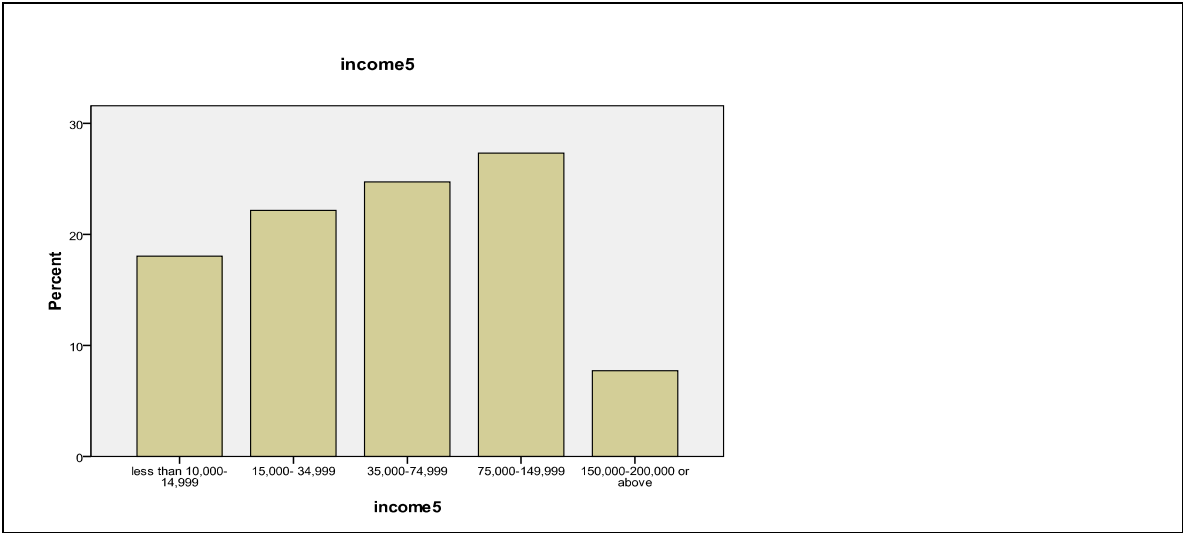
	Frequency	Percent	Valid Percent	Cumulative Percent
Valid North Coast	88	34.2	34.4	34.4
North County	56	21.8	21.9	56.3
City of San Luis Obispo	71	27.6	27.7	84.0
South County	41	16.0	16.0	100.0
Total	256	99.6	100.0	
Missing System	1	.4		
Total	257	100.0		

Current living situation

		Frequency	Percent	Valid Percent	Cumulative Percent
Valid	Live alone in own home	55	21.4	25.8	25.8
	Live with significant other in own home	93	36.2	43.7	69.5
	Live with family in own home	33	12.8	15.5	85.0
	Live with family in their home	7	2.7	3.3	88.3
	Live in a house with roommates	5	1.9	2.3	90.6
	Live in assisted living/ senior center	10	3.9	4.7	95.3
	Other	10	3.9	4.7	100.0
	Total	213	82.9	100.0	
Missing	System	44	17.1		
Total		257	100.0		

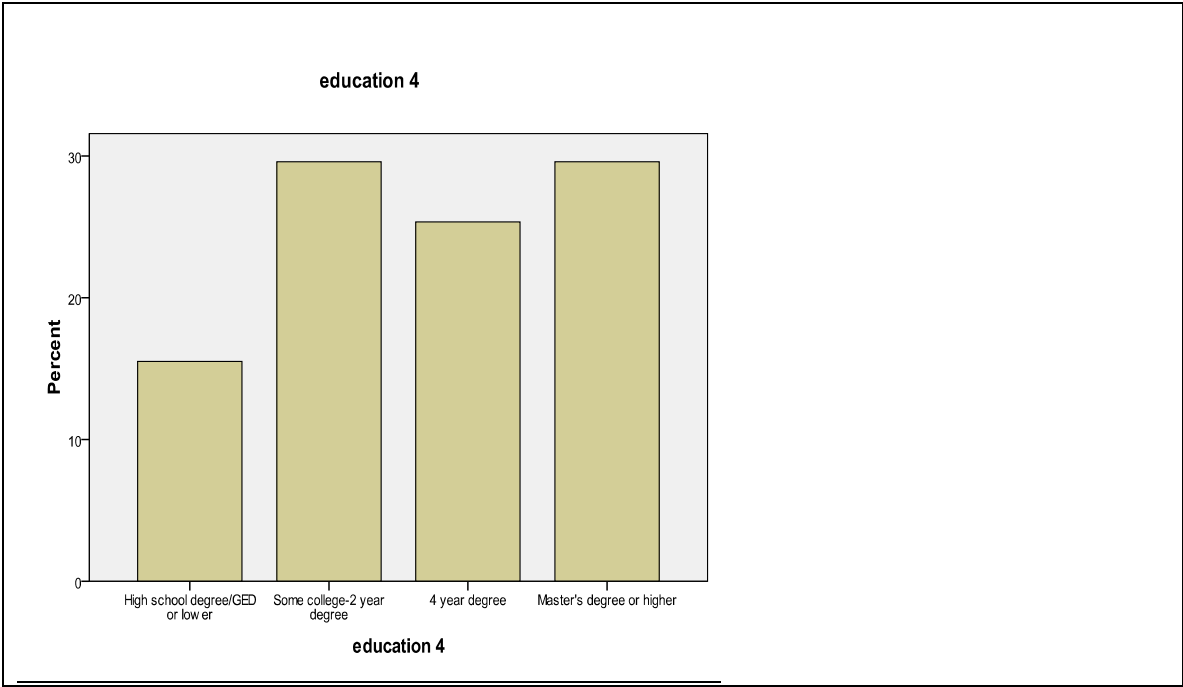
Race/Ethnicity

		Frequency	Percent	Valid Percent	Cumulative Percent
Valid	Asian	6	2.3	2.9	2.9
	Black	2	.8	1.0	3.8
	Hispanic	6	2.3	2.9	6.7
	Native American	2	.8	1.0	7.6
	White	191	74.3	91.0	98.6
	Other	3	1.2	1.4	100.0
	Total	210	81.7	100.0	
Missing	System	47	18.3		
Total		257	100.0		



income5

		Frequency	Percent	Valid Percent	Cumulative Percent
Valid	less than 10,000-14,999	35	13.6	18.0	18.0
	15,000-34,999	43	16.7	22.2	40.2
	35,000-74,999	48	18.7	24.7	64.9
	75,000-149,999	53	20.6	27.3	92.3
	150,000-200,000 or above	15	5.8	7.7	100.0
	Total	194	75.5	100.0	
	Missing	System	63	24.5	
Total		257	100.0		

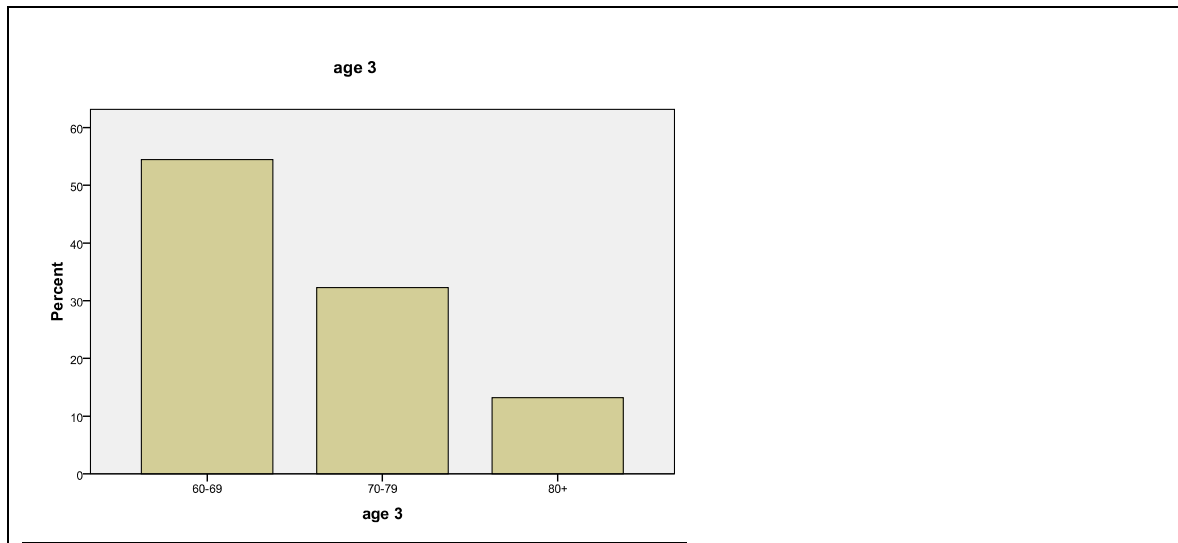


education 4

	Frequency	Percent	Valid Percent	Cumulative Percent
Valid High school degree/GED or lower	33	12.8	15.5	15.5
Some college-2 year degree	63	24.5	29.6	45.1
4 year degree	54	21.0	25.4	70.4
Master's degree or higher	63	24.5	29.6	100.0
Total	213	82.9	100.0	
Missin System g	44	17.1		
Total	257	100.0		

Age 7

		Frequency	Percent	Valid Percent	Cumulative Percent
Valid	60-64	72	28.0	28.0	28.0
	65-69	68	26.5	26.5	54.5
	70-74	42	16.3	16.3	70.8
	75-79	41	16.0	16.0	86.8
	80-84	19	7.4	7.4	94.2
	85-89	11	4.3	4.3	98.4
	90+	4	1.6	1.6	100.0
	Total	257	100.0	100.0	



age 3

	Frequency	Percent	Valid Percent	Cumulative Percent
Valid 60-69	140	54.5	54.5	54.5
70-79	83	32.3	32.3	86.8
80+	34	13.2	13.2	100.0
Total	257	100.0	100.0	

Frequencies:

Statistics

rate

N	Valid	203
	Missing	54
Mean		8.07
Median		8.00
Mode		10
Skewness		-1.139
Std. Error of Skewness		.171
Minimum		1
Maximum		10

Rate Quality of Life

		Frequency	Percent	Valid Percent	Cumulative Percent
Valid	1	1	.4	.5	.5
	2	1	.4	.5	1.0
	3	4	1.6	2.0	3.0
	4	4	1.6	2.0	4.9
	5	9	3.5	4.4	9.4
	6	14	5.4	6.9	16.3
	7	27	10.5	13.3	29.6
	8	52	20.2	25.6	55.2
	9	36	14.0	17.7	72.9
	10	55	21.4	27.1	100.0
	Total	203	79.0	100.0	
Missing	System	54	21.0		
Total		257	100.0		

Top Five Issues to improve lives of women and girls:

First choice

		Frequency	Percent	Valid Percent	Cumulative Percent
Valid	Affordable, Adequate Housing	24	9.3	11.6	11.6
	Basic Needs	72	28.0	34.8	46.4
	Domestic Violence	7	2.7	3.4	49.8
	Education	15	5.8	7.2	57.0
	Elderly Needs	21	8.2	10.1	67.1
	Financial Literacy	7	2.7	3.4	70.5
	Fragmentation of Services	2	.8	1.0	71.5
	Hopelessness	4	1.6	1.9	73.4
	Lack of Mentors	2	.8	1.0	74.4
	Lack of Opportunities	6	2.3	2.9	77.3
	Pay Inequality	5	1.9	2.4	79.7
	Peer Pressure	1	.4	.5	80.2
	Poverty	13	5.1	6.3	86.5
	Resources	1	.4	.5	87.0
	Self Esteem	5	1.9	2.4	89.4
	Sexual Assault	1	.4	.5	89.9
	Substance Abuse	1	.4	.5	90.3
	Teenage Pregnancy	3	1.2	1.4	91.8
	Traditional Gender Roles	3	1.2	1.4	93.2
	Transportation	8	3.1	3.9	97.1
	Violence in General	6	2.3	2.9	100.0
	Total	207	80.5	100.0	
Missing	System	50	19.5		
Total		257	100.0		

Second choice

		Frequency	Percent	Valid Percent	Cumulative Percent
Valid	Affordable, Adequate Childcare	19	7.4	9.3	9.3
	Basic Needs	34	13.2	16.6	25.9
	Domestic Violence	13	5.1	6.3	32.2
	Education	19	7.4	9.3	41.5
	Elderly Needs	27	10.5	13.2	54.6
	Financial Literacy	7	2.7	3.4	58.0
	Fragmentation of Services	7	2.7	3.4	61.5
	Hopelessness	3	1.2	1.5	62.9
	Lack of Mentors	9	3.5	4.4	67.3
	Lack of Opportunities	7	2.7	3.4	70.7
	Pay Inequality	10	3.9	4.9	75.6
	Peer Pressure	2	.8	1.0	76.6
	Poverty	17	6.6	8.3	84.9
	Resources	3	1.2	1.5	86.3
	Self Esteem	5	1.9	2.4	88.8
	Sexual Assault	3	1.2	1.5	90.2
	Substance Abuse	6	2.3	2.9	93.2
	Teenage Pregnancy	1	.4	.5	93.7
	Transportation	10	3.9	4.9	98.5
	Violence in General	3	1.2	1.5	100.0
	Total	205	79.8	100.0	
Missing	System	52	20.2		
Total		257	100.0		

Third choice

		Frequency	Percent	Valid Percent	Cumulative Percent
Valid	Affordable, Adequate Childcare	13	5.1	6.5	6.5
	Basic Needs	8	3.1	4.0	10.6
	Domestic Violence	11	4.3	5.5	16.1
	Education	18	7.0	9.0	25.1
	Elderly Needs	20	7.8	10.1	35.2
	Financial Literacy	9	3.5	4.5	39.7
	Fragmentation of Services	11	4.3	5.5	45.2
	Hopelessness	2	.8	1.0	46.2
	Lack of Mentors	3	1.2	1.5	47.7
	Lack of Opportunities	16	6.2	8.0	55.8
	Lack of Role Models	4	1.6	2.0	57.8
	Pay Inequality	10	3.9	5.0	62.8
	Peer Pressure	2	.8	1.0	63.8
	Poverty	13	5.1	6.5	70.4
	Resources	12	4.7	6.0	76.4
	Self Esteem	11	4.3	5.5	81.9
	Sexual Assault	3	1.2	1.5	83.4
	Substance Abuse	11	4.3	5.5	88.9
	Teenage Pregnancy	6	2.3	3.0	92.0
	Traditional Gender Roles	4	1.6	2.0	94.0
	Transportation	8	3.1	4.0	98.0
	Violence in General	4	1.6	2.0	100.0
	Total	199	77.4	100.0	
Missing	System	58	22.6		
Total		257	100.0		

Fourth choice

		Frequency	Percent	Valid Percent	Cumulative Percent
Valid	Affordable, Adequate Childcare	11	4.3	5.8	5.8
	Basic Needs	10	3.9	5.3	11.1
	Domestic Violence	1	.4	.5	11.6
	Education	16	6.2	8.5	20.1
	Elderly Needs	11	4.3	5.8	25.9
	Financial Literacy	8	3.1	4.2	30.2
	Fragmentation of Services	5	1.9	2.6	32.8
	Hopelessness	4	1.6	2.1	34.9
	Lack of Mentors	7	2.7	3.7	38.6
	Lack of Opportunities	15	5.8	7.9	46.6
	Lack of Role Models	4	1.6	2.1	48.7
	Pay Inequality	7	2.7	3.7	52.4
	Peer Pressure	2	.8	1.1	53.4
	Poverty	14	5.4	7.4	60.8
	Resources	13	5.1	6.9	67.7
	Self Esteem	4	1.6	2.1	69.8
	Sexual Assault	3	1.2	1.6	71.4
	Substance Abuse	15	5.8	7.9	79.4
	Teenage Pregnancy	11	4.3	5.8	85.2
	Traditional Gender Roles	2	.8	1.1	86.2
	Transportation	21	8.2	11.1	97.4
	Violence in General	5	1.9	2.6	100.0
	Total	189	73.5	100.0	
Missing	System	68	26.5		
Total		257	100.0		

Fifth choice

		Frequency	Percent	Valid Percent	Cumulative Percent
Valid	Affordable, Adequate Childcare	10	3.9	5.4	5.4
	Basic Needs	7	2.7	3.8	9.2
	Domestic Violence	14	5.4	7.6	16.8
	Education	10	3.9	5.4	22.2
	Elderly Needs	16	6.2	8.6	30.8
	Financial Literacy	12	4.7	6.5	37.3
	Fragmentation of Services	8	3.1	4.3	41.6
	Hopelessness	5	1.9	2.7	44.3
	Lack of Mentors	7	2.7	3.8	48.1
	Lack of Opportunities	15	5.8	8.1	56.2
	Lack of Role Models	6	2.3	3.2	59.5
	Pay Inequality	3	1.2	1.6	61.1
	Peer Pressure	6	2.3	3.2	64.3
	Poverty	6	2.3	3.2	67.6
	Resources	11	4.3	5.9	73.5
	Self Esteem	6	2.3	3.2	76.8
	Sexual Assault	1	.4	.5	77.3
	Substance Abuse	13	5.1	7.0	84.3
	Teenage Pregnancy	5	1.9	2.7	87.0
	Transportation	17	6.6	9.2	96.2
	Violence in General	7	2.7	3.8	100.0
	Total	185	72.0	100.0	
Missing	System	72	28.0		
Total		257	100.0		

Feel You Have Reasonable Access:

Domestic violence

	Frequency	Percent	Valid Percent	Cumulative Percent
Valid Yes	120	46.7	88.9	88.9
No	15	5.8	11.1	100.0
Total	135	52.5	100.0	
Missing 3	46	17.9		
System	76	29.6		
Total	122	47.5		
Total	257	100.0		

Affordable housing

	Frequency	Percent	Valid Percent	Cumulative Percent
Valid yes	110	42.8	68.3	68.3
No	51	19.8	31.7	100.0
Total	161	62.6	100.0	
Missing 3	34	13.2		
System	62	24.1		
Total	96	37.4		
Total	257	100.0		

Drug/alcohol treatment

	Frequency	Percent	Valid Percent	Cumulative Percent
Valid Yes	106	41.2	80.9	80.9
No	25	9.7	19.1	100.0
Total	131	51.0	100.0	
Missing 3	52	20.2		
System	74	28.8		
Total	126	49.0		
Total	257	100.0		

Education

		Frequency	Percent	Valid Percent	Cumulative Percent
Valid	Yes	163	63.4	91.6	91.6
	No	15	5.8	8.4	100.0
	Total	178	69.3	100.0	
Missing	3	15	5.8		
	System	64	24.9		
	Total	79	30.7		
Total		257	100.0		

Food/meals

		Frequency	Percent	Valid Percent	Cumulative Percent
Valid	Yes	172	66.9	92.0	92.0
	No	15	5.8	8.0	100.0
	Total	187	72.8	100.0	
Missing	3	11	4.3		
	System	59	23.0		
	Total	70	27.2		
Total		257	100.0		

Financial management

		Frequency	Percent	Valid Percent	Cumulative Percent
Valid	Yes	117	45.5	74.1	74.1
	No	41	16.0	25.9	100.0
	Total	158	61.5	100.0	
Missing	3	34	13.2		
	System	65	25.3		
	Total	99	38.5		
Total		257	100.0		

Health care

		Frequency	Percent	Valid Percent	Cumulative Percent
Valid	Yes	145	56.4	76.7	76.7
	No	44	17.1	23.3	100.0
	Total	189	73.5	100.0	
Missing	System	11	4.3		
	Total	57	22.2		
	Total	68	26.5		
Total		257	100.0		

Legal assistance

		Frequency	Percent	Valid Percent	Cumulative Percent
Valid	Yes	128	49.8	77.6	77.6
	No	37	14.4	22.4	100.0
	Total	165	64.2	100.0	
Missing	System	31	12.1		
	Total	61	23.7		
	Total	92	35.8		
Total		257	100.0		

Mental health services

		Frequency	Percent	Valid Percent	Cumulative Percent
Valid	Yes	107	41.6	71.8	71.8
	No	42	16.3	28.2	100.0
	Total	149	58.0	100.0	
Missing	System	42	16.3		
	Total	66	25.7		
	Total	108	42.0		
Total		257	100.0		

Personal safety

		Frequency	Percent	Valid Percent	Cumulative Percent
Valid	Yes	157	61.1	90.8	90.8
	No	16	6.2	9.2	100.0
	Total	173	67.3	100.0	
Missing	System	20	7.8		
	Total	64	24.9		
	Total	84	32.7		
Total		257	100.0		

Transportation

		Frequency	Percent	Valid Percent	Cumulative Percent
Valid	Yes	136	52.9	73.5	73.5
	No	49	19.1	26.5	100.0
	Total	185	72.0	100.0	
Missin	g	14	5.4		
	Syste	58	22.6		
	m				
	Total	72	28.0		
Total		257	100.0		

Barriers preventing you from getting help:

Barrier-Other

		Frequency	Percent	Valid Percent	Cumulative Percent
Valid	Yes	20	7.8	100.0	100.0
Missin	Syste	237	92.2		
g	m				
Total		257	100.0		

Financial barrier

		Frequency	Percent	Valid Percent	Cumulative Percent
Valid	Yes	76	29.6	100.0	100.0
Missi	Syste	181	70.4		
ng	m				
Total		257	100.0		

Transportation barrier

	Frequency	Percent	Valid Percent	Cumulative Percent
Valid Yes	34	13.2	100.0	100.0
Missin System	223	86.8		
Total	257	100.0		

Staff/family barrier

	Frequency	Percent	Valid Percent	Cumulative Percent
Valid Yes	5	1.9	100.0	100.0
Missin System	252	98.1		
Total	257	100.0		

Don't know how to access services

	Frequency	Percent	Valid Percent	Cumulative Percent
Valid Yes	38	14.8	100.0	100.0
Missin System	219	85.2		
Total	257	100.0		

Don't know what services are available

	Frequency	Percent	Valid Percent	Cumulative Percent
Valid Yes	62	24.1	100.0	100.0
Missin System	195	75.9		
Total	257	100.0		

Intimidated/hesitant to ask for help

	Frequency	Percent	Valid Percent	Cumulative Percent
Valid Yes	29	11.3	100.0	100.0
Missi Syst ng em	228	88.7		
Total	257	100.0		

How Secure you feel in the following areas:

Physical Security

		Frequency	Percent	Valid Percent	Cumulative Percent
Valid	Extremely Secure	53	20.6	25.2	25.2
	Very Secure	90	35.0	42.9	68.1
	Secure	49	19.1	23.3	91.4
	Slightly Secure	16	6.2	7.6	99.0
	Not Secure at All	2	.8	1.0	100.0
	Total	210	81.7	100.0	
Missing	System	47	18.3		
Total		257	100.0		

Emotional Security

		Frequency	Percent	Valid Percent	Cumulative Percent
Valid	Extremely Secure	58	22.6	27.6	27.6
	Very Secure	84	32.7	40.0	67.6
	Secure	51	19.8	24.3	91.9
	Slightly Secure	10	3.9	4.8	96.7
	Not Secure at All	7	2.7	3.3	100.0
	Total	210	81.7	100.0	
Missing	System	47	18.3		
Total		257	100.0		

Financial Security

		Frequency	Percent	Valid Percent	Cumulative Percent
Valid	Extremely Secure	35	13.6	16.7	16.7
	Very Secure	66	25.7	31.6	48.3
	Secure	59	23.0	28.2	76.6
	Slightly Secure	31	12.1	14.8	91.4
	Not Secure at All	18	7.0	8.6	100.0
	Total	209	81.3	100.0	
Missing	6	1	.4		
	System	47	18.3		
	Total	48	18.7		
Total		257	100.0		

Cross tabs:

Financial barrier * income5 Cross tabulation

			income5					Total
			less than 10,000-14,999	15,000- 34,999	35,000-74,999	75,000-149,999	150,000-200,000 or above	
BarFin	Yes	Count	24	20	18	8	2	72
		% within BarFin	33.3%	27.8%	25.0%	11.1%	2.8%	100.0%
Total		Count	24	20	18	8	2	72
		% within BarFin	33.3%	27.8%	25.0%	11.1%	2.8%	100.0%

Transportation barrier * income5 Cross tabulation

			income5				Total
			less than 10,000-14,999	15,000- 34,999	35,000-74,999	75,000-149,999	
BarTran	Yes	Count	12	6	8	6	32
		% within BarTran	37.5%	18.8%	25.0%	18.8%	100.0%
Total		Count	12	6	8	6	32
		% within BarTran	37.5%	18.8%	25.0%	18.8%	100.0%

Family/staff barrier * income5 Cross tabulation

			income5		Total
			less than 10,000-14,999	15,000- 34,999	
BarFam	Yes	Count	4	1	5
		% within BarFam	80.0%	20.0%	100.0%
Total		Count	4	1	5
		% within BarFam	80.0%	20.0%	100.0%

“Don’t know how to access” barrier * income5 Cross tabulation

		income5					Total
		less than 10,000-14,999	15,000- 34,999	35,000-74,999	75,000-149,999	150,000-200,000 or above	
BarAcces Yes	Count	6	8	9	10	2	35
	% within BarAcces	17.1%	22.9%	25.7%	28.6%	5.7%	100.0%
Total	Count	6	8	9	10	2	35
	% within BarAcces	17.1%	22.9%	25.7%	28.6%	5.7%	100.0%

“Don’t know what services are available” barrier * income5 Cross tabulation

		income5					Total
		less than 10,000- 14,999	15,000- 34,999	35,000-74,999	75,000-149,999	150,000-200,000 or above	
BarAvail Yes	Count	10	10	20	15	3	58
	% within BarAvail	17.2%	17.2%	34.5%	25.9%	5.2%	100.0%
Total	Count	10	10	20	15	3	58
	% within BarAvail	17.2%	17.2%	34.5%	25.9%	5.2%	100.0%

“Intimidated/hesitant to ask for help” barrier * income5 Cross tabulation

			income5					Total
			less than 10,000- 14,999	15,000- 34,999	35,000-74,999	75,000-149,999	150,000-200,000 or above	
BarInti	Yes	Count	4	11	9	4	1	29
		% within BarInti	13.8%	37.9%	31.0%	13.8%	3.4%	100.0%
Total		Count	4	11	9	4	1	29
		% within BarInti	13.8%	37.9%	31.0%	13.8%	3.4%	100.0%

“other” barriers * income5 Cross tabulation

			income5					Total
			less than 10,000-14,999	15,000- 34,999	35,000-74,999	75,000-149,999	150,000-200,000 or above	
BarOth	Yes	Count	4	1	3	8	2	18
		% within BarOth	22.2%	5.6%	16.7%	44.4%	11.1%	100.0%
Total		Count	4	1	3	8	2	18
		% within BarOth	22.2%	5.6%	16.7%	44.4%	11.1%	100.0%

Financial barrier * reside Cross tabulation

			reside				Total
			North Coast	North County	City of San Luis Obispo	South County	
BarFin	Yes	Count	25	28	13	10	76
		% within BarFin	32.9%	36.8%	17.1%	13.2%	100.0%
Total		Count	25	28	13	10	76
		% within BarFin	32.9%	36.8%	17.1%	13.2%	100.0%

Transportation barrier * reside Cross tabulation

			reside				Total
			North Coast	North County	City of San Luis Obispo	South County	
BarTran	Yes	Count	14	7	8	5	34
		% within BarTran	41.2%	20.6%	23.5%	14.7%	100.0%
Total		Count	14	7	8	5	34
		% within BarTran	41.2%	20.6%	23.5%	14.7%	100.0%

Family/staff barrier * reside Cross tabulation

			reside			Total
			North Coast	City of San Luis Obispo	South County	
BarFam	Yes	Count	2	2	1	5
		% within BarFam	40.0%	40.0%	20.0%	100.0%
Total		Count	2	2	1	5
		% within BarFam	40.0%	40.0%	20.0%	100.0%

“Don’t know how to access services” barrier * reside Cross tabulation

			reside				Total
			North Coast	North County	City of San Luis Obispo	South County	
BarAcces	Yes	Count	16	4	12	6	38
		% within BarAcces	42.1%	10.5%	31.6%	15.8%	100.0%
Total		Count	16	4	12	6	38
		% within BarAcces	42.1%	10.5%	31.6%	15.8%	100.0%

“Don’t know what services are available” barrier * reside Cross tabulation

			reside				Total
			North Coast	North County	City of San Luis Obispo	South County	
BarAvail	Yes	Count	28	8	13	13	62
		% within BarAvail	45.2%	12.9%	21.0%	21.0%	100.0%
Total		Count	28	8	13	13	62
		% within BarAvail	45.2%	12.9%	21.0%	21.0%	100.0%

“Intimidated/hesitant to ask for help” barrier * reside Cross tabulation

			reside				Total
			North Coast	North County	City of San Luis Obispo	South County	
BarInti	Yes	Count	14	4	7	4	29
		% within BarInti	48.3%	13.8%	24.1%	13.8%	100.0%
Total		Count	14	4	7	4	29
		% within BarInti	48.3%	13.8%	24.1%	13.8%	100.0%

“other” barriers * reside Cross tabulation

			reside				Total
			North Coast	North County	City of San Luis Obispo	South County	
BarOth	Yes	Count	6	7	6	1	20
		% within BarOth	30.0%	35.0%	30.0%	5.0%	100.0%
Total		Count	6	7	6	1	20
		% within BarOth	30.0%	35.0%	30.0%	5.0%	100.0%

reside * Financial Security (3) Cross tabulation

			SecFin3			Total
			Extremely/Very secure	Secure	Slightly/Not at all secure	
reside	North Coast	Count	32	26	19	77
		% within reside	41.6%	33.8%	24.7%	100.0%
		% within SecFin3	31.7%	44.1%	38.8%	36.8%
	North County	Count	22	10	15	47
		% within reside	46.8%	21.3%	31.9%	100.0%
		% within SecFin3	21.8%	16.9%	30.6%	22.5%
	City of San Luis Obispo	Count	28	14	11	53
		% within reside	52.8%	26.4%	20.8%	100.0%
		% within SecFin3	27.7%	23.7%	22.4%	25.4%
South County	Count	19	9	4	32	
	% within reside	59.4%	28.1%	12.5%	100.0%	
	% within SecFin3	18.8%	15.3%	8.2%	15.3%	
Total	Count	101	59	49	209	
	% within reside	48.3%	28.2%	23.4%	100.0%	
	% within SecFin3	100.0%	100.0%	100.0%	100.0%	

reside * Emotional security (3) Cross tabulation

			secEmo3			Total
			Extremely/Very secure	Secure	Slightly/Not at all secure	
reside	North Coast	Count	51	17	9	77
		% within reside	66.2%	22.1%	11.7%	100.0%
		% within secEmo3	35.9%	33.3%	52.9%	36.7%
	North County	Count	32	14	2	48
		% within reside	66.7%	29.2%	4.2%	100.0%
		% within secEmo3	22.5%	27.5%	11.8%	22.9%
	City of San Luis Obispo	Count	36	15	3	54
		% within reside	66.7%	27.8%	5.6%	100.0%
		% within secEmo3	25.4%	29.4%	17.6%	25.7%
South County	Count	23	5	3	31	
	% within reside	74.2%	16.1%	9.7%	100.0%	
	% within secEmo3	16.2%	9.8%	17.6%	14.8%	
Total	Count	142	51	17	210	
	% within reside	67.6%	24.3%	8.1%	100.0%	
	% within secEmo3	100.0%	100.0%	100.0%	100.0%	

reside * physical security (3) Cross tabulation

			secPhy3			Total
			Extremely/Very secure	Secure	Slightly/Not secure at all	
reside	North Coast	Count	55	18	4	77
		% within reside	71.4%	23.4%	5.2%	100.0%
		% within secPhy3	38.5%	36.7%	22.2%	36.7%
	North County	Count	30	9	8	47
		% within reside	63.8%	19.1%	17.0%	100.0%
		% within secPhy3	21.0%	18.4%	44.4%	22.4%
	City of San Luis Obispo	Count	34	17	3	54
		% within reside	63.0%	31.5%	5.6%	100.0%
		% within secPhy3	23.8%	34.7%	16.7%	25.7%
South County	Count	24	5	3	32	
	% within reside	75.0%	15.6%	9.4%	100.0%	
	% within secPhy3	16.8%	10.2%	16.7%	15.2%	
Total	Count	143	49	18	210	
	% within reside	68.1%	23.3%	8.6%	100.0%	
	% within secPhy3	100.0%	100.0%	100.0%	100.0%	

income5 * Physical security (3) Cross tabulation

			secPhy3			Total
			Extremely/Very secure	Secure	Slightly/Not secure at all	
income5	less than 10,000-14,999	Count	15	8	11	34
		% within income5	44.1%	23.5%	32.4%	100.0%
		% within secPhy3	11.3%	18.6%	68.8%	17.7%
	15,000- 34,999	Count	27	13	3	43
		% within income5	62.8%	30.2%	7.0%	100.0%
		% within secPhy3	20.3%	30.2%	18.8%	22.4%
	35,000-74,999	Count	39	8	1	48
		% within income5	81.3%	16.7%	2.1%	100.0%
		% within secPhy3	29.3%	18.6%	6.3%	25.0%
	75,000-149,999	Count	41	10	1	52
		% within income5	78.8%	19.2%	1.9%	100.0%
		% within secPhy3	30.8%	23.3%	6.3%	27.1%
	150,000-200,000 or above	Count	11	4	0	15
		% within income5	73.3%	26.7%	.0%	100.0%
		% within secPhy3	8.3%	9.3%	.0%	7.8%
Total		Count	133	43	16	192
		% within income5	69.3%	22.4%	8.3%	100.0%
		% within secPhy3	100.0%	100.0%	100.0%	100.0%

Income (5) * Emotional Security (3) Cross tabulation

			secEmo3			Total
			Extremely/Very secure	Secure	Slightly/Not at all secure	
income5	less than 10,000-14,999	Count	18	12	4	34
		% within income5	52.9%	35.3%	11.8%	100.0%
		% within secEmo3	14.1%	25.5%	23.5%	17.7%
	15,000- 34,999	Count	22	15	6	43
		% within income5	51.2%	34.9%	14.0%	100.0%
		% within secEmo3	17.2%	31.9%	35.3%	22.4%
	35,000-74,999	Count	34	9	5	48
		% within income5	70.8%	18.8%	10.4%	100.0%
		% within secEmo3	26.6%	19.1%	29.4%	25.0%
	75,000-149,999	Count	45	5	2	52
		% within income5	86.5%	9.6%	3.8%	100.0%
		% within secEmo3	35.2%	10.6%	11.8%	27.1%
	150,000-200,000 or above	Count	9	6	0	15
		% within income5	60.0%	40.0%	.0%	100.0%
		% within secEmo3	7.0%	12.8%	.0%	7.8%
	Total	Count	128	47	17	192
		% within income5	66.7%	24.5%	8.9%	100.0%
		% within secEmo3	100.0%	100.0%	100.0%	100.0%

Income (5) * Financial Security (3) Cross tabulation

			SecFin3			Total
			Extremely/Very secure	Secure	Slightly/Not at all secure	
income5	less than 10,000-14,999	Count	8	9	16	33
		% within income5	24.2%	27.3%	48.5%	100.0%
		% within SecFin3	8.6%	17.3%	34.8%	17.3%
	15,000- 34,999	Count	12	10	21	43
		% within income5	27.9%	23.3%	48.8%	100.0%
		% within SecFin3	12.9%	19.2%	45.7%	22.5%
	35,000-74,999	Count	27	14	7	48
		% within income5	56.3%	29.2%	14.6%	100.0%
		% within SecFin3	29.0%	26.9%	15.2%	25.1%
	75,000-149,999	Count	34	16	2	52
		% within income5	65.4%	30.8%	3.8%	100.0%
		% within SecFin3	36.6%	30.8%	4.3%	27.2%
	150,000-200,000 or above	Count	12	3	0	15
		% within income5	80.0%	20.0%	.0%	100.0%
		% within SecFin3	12.9%	5.8%	.0%	7.9%
	Total	Count	93	52	46	191
		% within income5	48.7%	27.2%	24.1%	100.0%
		% within SecFin3	100.0%	100.0%	100.0%	100.0%

Income (5) * Domestic Violence Cross tabulation

			dviol		Total
			Yes	No	
income5	less than 10,000-14,999	Count	14	7	21
		% within income5	66.7%	33.3%	100.0%
		% within dviol	12.8%	50.0%	17.1%
15,000- 34,999	15,000- 34,999	Count	15	4	19
		% within income5	78.9%	21.1%	100.0%
		% within dviol	13.8%	28.6%	15.4%
35,000-74,999	35,000-74,999	Count	32	1	33
		% within income5	97.0%	3.0%	100.0%
		% within dviol	29.4%	7.1%	26.8%
75,000-149,999	75,000-149,999	Count	35	1	36
		% within income5	97.2%	2.8%	100.0%
		% within dviol	32.1%	7.1%	29.3%
150,000-200,000 or above	150,000-200,000 or above	Count	13	1	14
		% within income5	92.9%	7.1%	100.0%
		% within dviol	11.9%	7.1%	11.4%
Total	Total	Count	109	14	123
		% within income5	88.6%	11.4%	100.0%
		% within dviol	100.0%	100.0%	100.0%

Income (5) * Affordable Housing Cross tabulation

			affhouse		Total
			yes	No	
income5	less than 10,000-14,999	Count	19	12	31
		% within income5	61.3%	38.7%	100.0%
		% within affhouse	19.6%	25.0%	21.4%
15,000- 34,999	15,000- 34,999	Count	13	14	27
		% within income5	48.1%	51.9%	100.0%
		% within affhouse	13.4%	29.2%	18.6%
35,000-74,999	35,000-74,999	Count	26	13	39
		% within income5	66.7%	33.3%	100.0%
		% within affhouse	26.8%	27.1%	26.9%
75,000-149,999	75,000-149,999	Count	27	9	36
		% within income5	75.0%	25.0%	100.0%
		% within affhouse	27.8%	18.8%	24.8%
150,000-200,000 or above	150,000-200,000 or above	Count	12	0	12
		% within income5	100.0%	.0%	100.0%
		% within affhouse	12.4%	.0%	8.3%
Total	Total	Count	97	48	145
		% within income5	66.9%	33.1%	100.0%
		% within affhouse	100.0%	100.0%	100.0%

Income (5) * Drug/alcohol treatment Cross tabulation

			drugalc		Total
			Yes	No	
income5	less than 10,000-14,999	Count	17	5	22
		% within income5	77.3%	22.7%	100.0%
		% within drugalc	17.5%	20.8%	18.2%
15,000- 34,999	15,000- 34,999	Count	13	6	19
		% within income5	68.4%	31.6%	100.0%
		% within drugalc	13.4%	25.0%	15.7%
35,000-74,999	35,000-74,999	Count	26	4	30
		% within income5	86.7%	13.3%	100.0%
		% within drugalc	26.8%	16.7%	24.8%
75,000-149,999	75,000-149,999	Count	31	7	38
		% within income5	81.6%	18.4%	100.0%
		% within drugalc	32.0%	29.2%	31.4%
150,000-200,000 or above	150,000-200,000 or above	Count	10	2	12
		% within income5	83.3%	16.7%	100.0%
		% within drugalc	10.3%	8.3%	9.9%
Total	Total	Count	97	24	121
		% within income5	80.2%	19.8%	100.0%
		% within drugalc	100.0%	100.0%	100.0%

Income (5) * Education Cross tabulation

			educ		Total
			Yes	No	
income5	less than 10,000-14,999	Count	22	4	26
		% within income5	84.6%	15.4%	100.0%
		% within educ	14.8%	28.6%	16.0%
	15,000- 34,999	Count	28	2	30
		% within income5	93.3%	6.7%	100.0%
		% within educ	18.8%	14.3%	18.4%
	35,000-74,999	Count	37	6	43
		% within income5	86.0%	14.0%	100.0%
		% within educ	24.8%	42.9%	26.4%
75,000-149,999	Count	48	2	50	
	% within income5	96.0%	4.0%	100.0%	
	% within educ	32.2%	14.3%	30.7%	
150,000-200,000 or above	Count	14	0	14	
	% within income5	100.0%	.0%	100.0%	
	% within educ	9.4%	.0%	8.6%	
Total	Count	149	14	163	
	% within income5	91.4%	8.6%	100.0%	
	% within educ	100.0%	100.0%	100.0%	

Income (5) * Financial management Cross tabulation

			finance		Total
			Yes	No	
income5	less than 10,000-14,999	Count	15	10	25
		% within income5	60.0%	40.0%	100.0%
		% within finance	14.3%	25.6%	17.4%
	15,000- 34,999	Count	15	12	27
		% within income5	55.6%	44.4%	100.0%
		% within finance	14.3%	30.8%	18.8%
	35,000-74,999	Count	29	8	37
		% within income5	78.4%	21.6%	100.0%
		% within finance	27.6%	20.5%	25.7%
75,000-149,999	Count	34	8	42	
	% within income5	81.0%	19.0%	100.0%	
	% within finance	32.4%	20.5%	29.2%	
150,000-200,000 or above	Count	12	1	13	
	% within income5	92.3%	7.7%	100.0%	
	% within finance	11.4%	2.6%	9.0%	
Total	Count	105	39	144	
	% within income5	72.9%	27.1%	100.0%	
	% within finance	100.0%	100.0%	100.0%	

Income (5) * Food/meals Cross tabulation

			food		Total
			Yes	No	
income5	less than 10,000-14,999	Count	28	4	32
		% within income5	87.5%	12.5%	100.0%
		% within food	18.2%	26.7%	18.9%
	15,000- 34,999	Count	26	7	33
		% within income5	78.8%	21.2%	100.0%
		% within food	16.9%	46.7%	19.5%
	35,000-74,999	Count	42	1	43
		% within income5	97.7%	2.3%	100.0%
		% within food	27.3%	6.7%	25.4%
75,000-149,999	Count	44	3	47	
	% within income5	93.6%	6.4%	100.0%	
	% within food	28.6%	20.0%	27.8%	
150,000-200,000 or above	Count	14	0	14	
	% within income5	100.0%	.0%	100.0%	
	% within food	9.1%	.0%	8.3%	
Total	Count	154	15	169	
	% within income5	91.1%	8.9%	100.0%	
	% within food	100.0%	100.0%	100.0%	

Income (5) * Health care Cross tabulation

			health		Total
			Yes	No	
income5	less than 10,000-14,999	Count	22	9	31
		% within income5	71.0%	29.0%	100.0%
		% within health	16.9%	20.9%	17.9%
	15,000- 34,999	Count	26	10	36
		% within income5	72.2%	27.8%	100.0%
		% within health	20.0%	23.3%	20.8%
	35,000-74,999	Count	36	8	44
		% within income5	81.8%	18.2%	100.0%
		% within health	27.7%	18.6%	25.4%
75,000-149,999	Count	33	15	48	
	% within income5	68.8%	31.3%	100.0%	
	% within health	25.4%	34.9%	27.7%	
150,000-200,000 or above	Count	13	1	14	
	% within income5	92.9%	7.1%	100.0%	
	% within health	10.0%	2.3%	8.1%	
Total	Count	130	43	173	
	% within income5	75.1%	24.9%	100.0%	
	% within health	100.0%	100.0%	100.0%	

Income (5) * Legal assistance Cross tabulation

			legal		Total
			Yes	No	
income5	less than 10,000-14,999	Count	17	9	26
		% within income5	65.4%	34.6%	100.0%
		% within legal	14.8%	25.0%	17.2%
15,000- 34,999		Count	20	9	29
		% within income5	69.0%	31.0%	100.0%
		% within legal	17.4%	25.0%	19.2%
35,000-74,999		Count	31	8	39
		% within income5	79.5%	20.5%	100.0%
		% within legal	27.0%	22.2%	25.8%
75,000-149,999		Count	36	8	44
		% within income5	81.8%	18.2%	100.0%
		% within legal	31.3%	22.2%	29.1%
150,000-200,000 or above		Count	11	2	13
		% within income5	84.6%	15.4%	100.0%
		% within legal	9.6%	5.6%	8.6%
Total		Count	115	36	151
		% within income5	76.2%	23.8%	100.0%
		% within legal	100.0%	100.0%	100.0%

Income (5) * Mental health services Cross tabulation

			mental		Total
			Yes	No	
income5	less than 10,000-14,999	Count	15	7	22
		% within income5	68.2%	31.8%	100.0%
		% within mental	15.5%	17.5%	16.1%
	15,000- 34,999	Count	19	7	26
		% within income5	73.1%	26.9%	100.0%
		% within mental	19.6%	17.5%	19.0%
	35,000-74,999	Count	27	9	36
		% within income5	75.0%	25.0%	100.0%
		% within mental	27.8%	22.5%	26.3%
75,000-149,999	Count	25	14	39	
	% within income5	64.1%	35.9%	100.0%	
	% within mental	25.8%	35.0%	28.5%	
150,000-200,000 or above	Count	11	3	14	
	% within income5	78.6%	21.4%	100.0%	
	% within mental	11.3%	7.5%	10.2%	
Total	Count	97	40	137	
	% within income5	70.8%	29.2%	100.0%	
	% within mental	100.0%	100.0%	100.0%	

Income (5) * Personal safety Cross tabulation

			safety		Total
			Yes	No	
income5	less than 10,000-14,999	Count	22	5	27
		% within income5	81.5%	18.5%	100.0%
		% within safety	15.5%	31.3%	17.1%
	15,000- 34,999	Count	26	4	30
		% within income5	86.7%	13.3%	100.0%
		% within safety	18.3%	25.0%	19.0%
	35,000-74,999	Count	39	2	41
		% within income5	95.1%	4.9%	100.0%
		% within safety	27.5%	12.5%	25.9%
75,000-149,999	Count	41	5	46	
	% within income5	89.1%	10.9%	100.0%	
	% within safety	28.9%	31.3%	29.1%	
150,000-200,000 or above	Count	14	0	14	
	% within income5	100.0%	.0%	100.0%	
	% within safety	9.9%	.0%	8.9%	
Total	Count	142	16	158	
	% within income5	89.9%	10.1%	100.0%	
	% within safety	100.0%	100.0%	100.0%	

Income (5) * Transportation Cross tabulation

			transpo		Total
			Yes	No	
income5	less than 10,000-14,999	Count	20	12	32
		% within income5	62.5%	37.5%	100.0%
		% within transpo	16.8%	25.0%	19.2%
	15,000- 34,999	Count	21	12	33
		% within income5	63.6%	36.4%	100.0%
		% within transpo	17.6%	25.0%	19.8%
	35,000-74,999	Count	33	10	43
		% within income5	76.7%	23.3%	100.0%
		% within transpo	27.7%	20.8%	25.7%
75,000-149,999	Count	33	13	46	
	% within income5	71.7%	28.3%	100.0%	
	% within transpo	27.7%	27.1%	27.5%	
150,000-200,000 or above	Count	12	1	13	
	% within income5	92.3%	7.7%	100.0%	
	% within transpo	10.1%	2.1%	7.8%	
Total	Count	119	48	167	
	% within income5	71.3%	28.7%	100.0%	
	% within transpo	100.0%	100.0%	100.0%	

reside * Affordable housing Cross tabulation

			affhouse		Total
			yes	No	
reside North Coast	Count		37	19	56
	% within		66.1	33.9	100.0
	reside		%	%	%
	% within		33.6	37.3	34.8
	affhouse		%	%	%
North County	Count		24	9	33
	% within		72.7	27.3	100.0
	reside		%	%	%
	% within		21.8	17.6	20.5
	affhouse		%	%	%
City of San Luis Obispo	Count		35	13	48
	% within		72.9	27.1	100.0
	reside		%	%	%
	% within		31.8	25.5	29.8
	affhouse		%	%	%
South County	Count		14	10	24
	% within		58.3	41.7	100.0
	reside		%	%	%
	% within		12.7	19.6	14.9
	affhouse		%	%	%
Total	Count		110	51	161
	% within		68.3	31.7	100.0
	reside		%	%	%
	% within		100.0	100.0	100.0
	affhouse		%	%	%

reside * Domestic violence Cross tabulation

			dviol		Total
			Yes	No	
reside North Coast	Count		37	7	44
	% within		84.1	15.9	100.0
	reside		%	%	%
	% within		30.8	46.7	32.6
	dviol		%	%	%
North County	Count		31	3	34
	% within		91.2	8.8%	100.0
	reside		%	%	%
	% within		25.8	20.0	25.2
	dviol		%	%	%
City of San Luis Obispo	Count		33	3	36
	% within		91.7	8.3%	100.0
	reside		%	%	%
	% within		27.5	20.0	26.7
	dviol		%	%	%
South County	Count		19	2	21
	% within		90.5	9.5%	100.0
	reside		%	%	%
	% within		15.8	13.3	15.6
	dviol		%	%	%
Total	Count		120	15	135
	% within		88.9	11.1	100.0
	reside		%	%	%
	% within		100.0	100.0	100.0
	dviol		%	%	%

reside * Drug/alcohol treatment Cross tabulation

			drugalc		Total
			Yes	No	
reside	North Coast	Count	33	13	46
		% within reside	71.7%	28.3%	100.0%
		% within drugalc	31.1%	52.0%	35.1%
North County	North County	Count	28	5	33
		% within reside	84.8%	15.2%	100.0%
		% within drugalc	26.4%	20.0%	25.2%
City of San Luis Obispo	City of San Luis Obispo	Count	32	2	34
		% within reside	94.1%	5.9%	100.0%
		% within drugalc	30.2%	8.0%	26.0%
South County	South County	Count	13	5	18
		% within reside	72.2%	27.8%	100.0%
		% within drugalc	12.3%	20.0%	13.7%
Total	Total	Count	106	25	131
		% within reside	80.9%	19.1%	100.0%
		% within drugalc	100.0%	100.0%	100.0%

reside * education Cross tabulation

			educ		Total
			Yes	No	
reside	North Coast	Count	60	3	63
		% within reside	95.2%	4.8%	100.0%
		% within educ	36.8%	20.0%	35.4%
North County	North County	Count	35	5	40
		% within reside	87.5%	12.5%	100.0%
		% within educ	21.5%	33.3%	22.5%
City of San Luis Obispo	City of San Luis Obispo	Count	43	4	47
		% within reside	91.5%	8.5%	100.0%
		% within educ	26.4%	26.7%	26.4%
South County	South County	Count	25	3	28
		% within reside	89.3%	10.7%	100.0%
		% within educ	15.3%	20.0%	15.7%
Total	Total	Count	163	15	178
		% within reside	91.6%	8.4%	100.0%
		% within educ	100.0%	100.0%	100.0%

reside * financial management Cross tabulation

			finance		Total
			Yes	No	
reside North Coast	Count		39	17	56
	% within		69.6	30.4	100.0
	reside		%	%	%
	% within		33.3	41.5	35.4
	finance		%	%	%
North County	Count		29	9	38
	% within		76.3	23.7	100.0
	reside		%	%	%
	% within		24.8	22.0	24.1
	finance		%	%	%
City of San Luis Obispo	Count		35	9	44
	% within		79.5	20.5	100.0
	reside		%	%	%
	% within		29.9	22.0	27.8
	finance		%	%	%
South County	Count		14	6	20
	% within		70.0	30.0	100.0
	reside		%	%	%
	% within		12.0	14.6	12.7
	finance		%	%	%
Total	Count		117	41	158
	% within		74.1	25.9	100.0
	reside		%	%	%
	% within		100.0	100.0	100.0
	finance		%	%	%

reside * food/meals Cross tabulation

			food		Total
			Yes	No	
reside North Coast	Count		67	4	71
	% within		94.4	5.6%	100.0
	reside		%		0%
	% within		39.0	26.7	38.0
	food		%	%	%
North County	Count		33	7	40
	% within		82.5	17.5	100.0
	reside		%	%	0%
	% within		19.2	46.7	21.4
	food		%	%	%
City of San Luis Obispo	Count		46	2	48
	% within		95.8	4.2%	100.0
	reside		%		0%
	% within		26.7	13.3	25.7
	food		%	%	%
South County	Count		26	2	28
	% within		92.9	7.1%	100.0
	reside		%		0%
	% within		15.1	13.3	15.0
	food		%	%	%
Total	Count		172	15	187
	% within		92.0	8.0%	100.0
	reside		%		0%
	% within		100.0	100.0	100.0
	food		0%	0%	0%

reside * health care Cross tabulation

			health		Total
			Yes	No	
reside	North Coast	Count	56	16	72
		% within reside	77.8%	22.2%	100.0%
	% within health	Count	38.6%	36.4%	38.1%
		% within health	%	%	%
North County	Count	31	9	40	
		% within reside	77.5%	22.5%	100.0%
	% within health	Count	21.4%	20.5%	21.2%
		% within health	%	%	%
City of San Luis Obispo	Count	38	12	50	
		% within reside	76.0%	24.0%	100.0%
	% within health	Count	26.2%	27.3%	26.5%
		% within health	%	%	%
South County	Count	20	7	27	
		% within reside	74.1%	25.9%	100.0%
	% within health	Count	13.8%	15.9%	14.3%
		% within health	%	%	%
Total	Count	145	44	189	
		% within reside	76.7%	23.3%	100.0%
	% within health	Count	100.0%	100.0%	100.0%
		% within health	%	%	%

reside * legal assistance Cross tabulation

			legal		Total
			Yes	No	
reside	North Coast	Count	44	12	56
		% within reside	78.6%	21.4%	100.0%
	% within legal	Count	34.4%	32.4%	33.9%
		% within legal	%	%	%
North County	Count	34	5	39	
		% within reside	87.2%	12.8%	100.0%
	% within legal	Count	26.6%	13.5%	23.6%
		% within legal	%	%	%
City of San Luis Obispo	Count	34	12	46	
		% within reside	73.9%	26.1%	100.0%
	% within legal	Count	26.6%	32.4%	27.9%
		% within legal	%	%	%
South County	Count	16	8	24	
		% within reside	66.7%	33.3%	100.0%
	% within legal	Count	12.5%	21.6%	14.5%
		% within legal	%	%	%
Total	Count	128	37	165	
		% within reside	77.6%	22.4%	100.0%
	% within legal	Count	100.0%	100.0%	100.0%
		% within legal	0%	0%	0%

reside * mental health services Cross tabulation

			mental		Total
			Yes	No	
reside North Coast	Count		40	15	55
	% within		72.7	27.3	100.0
	reside		%	%	%
	% within		37.4	35.7	36.9
	mental		%	%	%
	North County		Count	22	9
	% within		71.0	29.0	100.0
	reside		%	%	%
	% within		20.6	21.4	20.8
	mental		%	%	%
City of San Luis Obispo	Count		27	10	37
	% within		73.0	27.0	100.0
	reside		%	%	%
	% within		25.2	23.8	24.8
	mental		%	%	%
South County	Count		18	8	26
	% within		69.2	30.8	100.0
	reside		%	%	%
	% within		16.8	19.0	17.4
	mental		%	%	%
Total	Count		107	42	149
	% within		71.8	28.2	100.0
	reside		%	%	%
	% within		100.0	100.0	100.0
	mental		%	%	%

reside *personal safety Cross tabulation

			safety		Total
			Yes	No	
reside North Coast	Count		61	3	64
	% within		95.3	4.7%	100.0
	reside		%	%	%
	% within		38.9	18.8	37.0
	safety		%	%	%
North County	Count		33	4	37
	% within		89.2	10.8	100.0
	reside		%	%	%
	% within		21.0	25.0	21.4
	safety		%	%	%
City of San Luis Obispo	Count		41	5	46
	% within		89.1	10.9	100.0
	reside		%	%	%
	% within		26.1	31.3	26.6
	safety		%	%	%
South County	Count		22	4	26
	% within		84.6	15.4	100.0
	reside		%	%	%
	% within		14.0	25.0	15.0
	safety		%	%	%
Total	Count		157	16	173
	% within		90.8	9.2%	100.0
	reside		%	%	%
	% within		100.0	100.0	100.0
	safety		%	%	%

reside * transportation Cross tabulation

			transpo		Total
			Yes	No	
reside	North Coast	Count	53	15	68
		% within reside	77.9%	22.1%	100.0%
		% within transpo	39.0%	30.6%	36.8%
	North County	Count	32	8	40
		% within reside	80.0%	20.0%	100.0%
		% within transpo	23.5%	16.3%	21.6%
	City of San Luis Obispo	Count	35	14	49
		% within reside	71.4%	28.6%	100.0%
		% within transpo	25.7%	28.6%	26.5%
	South County	Count	16	12	28
		% within reside	57.1%	42.9%	100.0%
		% within transpo	11.8%	24.5%	15.1%
Total	Count	136	49	185	
	% within reside	73.5%	26.5%	100.0%	
	% within transpo	100.0%	100.0%	100.0%	

Correlations

		income5	education 4
income5	Pearson Correlation	1	.560**
	Sig. (2-tailed)		.000
	N	194	194
education 4	Pearson Correlation	.560**	1
	Sig. (2-tailed)	.000	
	N	194	213

** . Correlation is significant at the 0.01 level (2-tailed).

Income (5) * Education (4) Cross tabulation

			education 4				Total
			High school degree/GED or lower	Some college-2 year degree	4 year degree	Master's degree or higher	
income5	less than 10,000-14,999	Count	13	15	5	2	35
		% within income5	37.1%	42.9%	14.3%	5.7%	100.0%
		% within education 4	46.4%	27.8%	10.0%	3.2%	18.0%
	15,000- 34,999	Count	9	17	11	6	43
		% within income5	20.9%	39.5%	25.6%	14.0%	100.0%
		% within education 4	32.1%	31.5%	22.0%	9.7%	22.2%
	35,000-74,999	Count	5	15	14	14	48
		% within income5	10.4%	31.3%	29.2%	29.2%	100.0%
		% within education 4	17.9%	27.8%	28.0%	22.6%	24.7%
	75,000-149,999	Count	1	7	15	30	53
		% within income5	1.9%	13.2%	28.3%	56.6%	100.0%
		% within education 4	3.6%	13.0%	30.0%	48.4%	27.3%
	150,000-200,000 or above	Count	0	0	5	10	15
		% within income5	.0%	.0%	33.3%	66.7%	100.0%
		% within education 4	.0%	.0%	10.0%	16.1%	7.7%
Total		Count	28	54	50	62	194
		% within income5	14.4%	27.8%	25.8%	32.0%	100.0%
		% within education 4	100.0%	100.0%	100.0%	100.0%	100.0%